

# WOODCHIPS 2019

**Volume 25  
Number 9**



[www.kcwoodturners.org](http://www.kcwoodturners.org)

3189 Mercier Kansas City, Kansas 64111

## October Challenge

**Make a toy**

**Check the Silent Auction  
when you arrive**

## September Demonstration

Aron Crittendon will make a small lidded boxes that has different wood on the inside than the outside.



## 2019 IRISH FEST

This years Irish Fest was, to put it mildly, phenomenal. We had the most participation of the members of KCWT that we have ever had. That is just talking about those who helped at the event and we had even more who contributed pieces for sale. It seemed as if everyone had a good time turning, talking with people who stopped by, selling the items we brought to sell, and we actually signed up two new members.

The weather cooperated by being spectacular. We had a bit of rain Friday morning which is to be expected. An Irish anything without rain just wouldn't feel right. The rest of the weekend was perfect. For those of you who weren't there, hope you got out and enjoyed the best weekend ever.

As you know, KCWT is a volunteer organization and nothing happens without the help they provide. Please thank the following individuals, some of whom put in hours and days of help on the Fest.

**Jeter Benbow - Sue Bergstrand - Stanley Bier - David Blair - Jeffrey Bollman - Dan and Linda Carlson  
- Jerry Darter - Larry Dice - Anthony Harris - Jerry James - Ed Jasczszak - Efi Kamara - Charles  
Levenson - Ann Mellina - Shaun McMahon - Jerry and Linda McMaster - Kevin Neelley - Howard  
Russell - Mike Thomas - Kevin and Cathy Turk**





The setup took a couple hours and went smoothly because of all the help. The same was true of the take down. Ask Ed about how we moved lathes.

We had the nicest people taking care of the space but also met a great many fun people who stopped by.







One of the exciting things is watching the faces of children while things are being turned. They just seem to be mesmerized by the chips flying around and the shape emerging from the wood.



**Paige O'Connor - our guardian angel**





# Demonstration Desktop Roulette

**Kris Coyan** provided the entertainment for this months demonstration. He was Inspired by something he saw on Pinterest and is interested in how to use flat turnoffs. The toy, sort of a roulette game, has evolved over a bit of time. It is basically two pieces of wood put together with a friction fit and a piece of plexiglass and a top. A three piece thing with a top.





It uses dimensional lumber and is easy to turn and uses needs the my wife already has. It is easy to customize and fun to decorate.

He showed how to do the “arena” the bottom piece and the “stadium.” He started using the airlift pellets as they are round, don’t have holes in them and are the perfect size. For \$5 he got two thousand of them - 6mm size.

He started with the arena piece and started with three strips of double stick tape and adheres the arena to another piece of wood on the faceplate as he will use the wood to make a jam chuck. He makes the arena a bit smaller than the stadium because he wants to fit the top piece to the bottom. And, a slow curve into the center because the beds need to collect in the center. He will also put a foot on the bottom.

The pockets for the beads around the edge of the arena are just enough to hold a bead. There are twelve of them. He uses a drill press for this.

The function of the stadium is to have the beads bounce back into the arena. This piece is a bit larger than the arena.

The full instructions are in the Library on our website



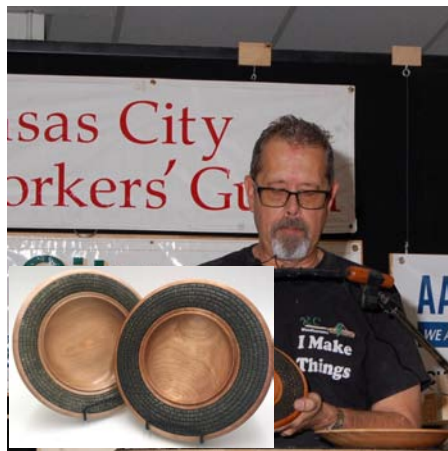
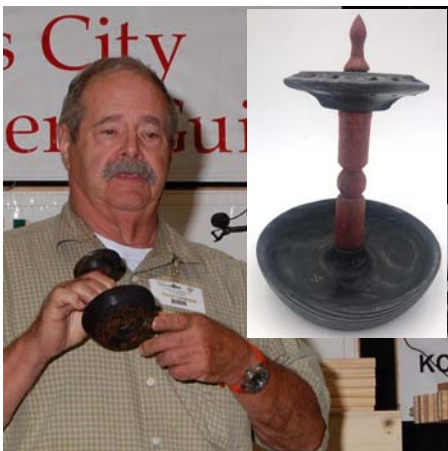


# THE CHALLENGE

**Craig Arnold**, the president of the Guild, presented a demonstration last month on finishing. He challenged KCWT members to try a finish, on anything, that they had never tried before.



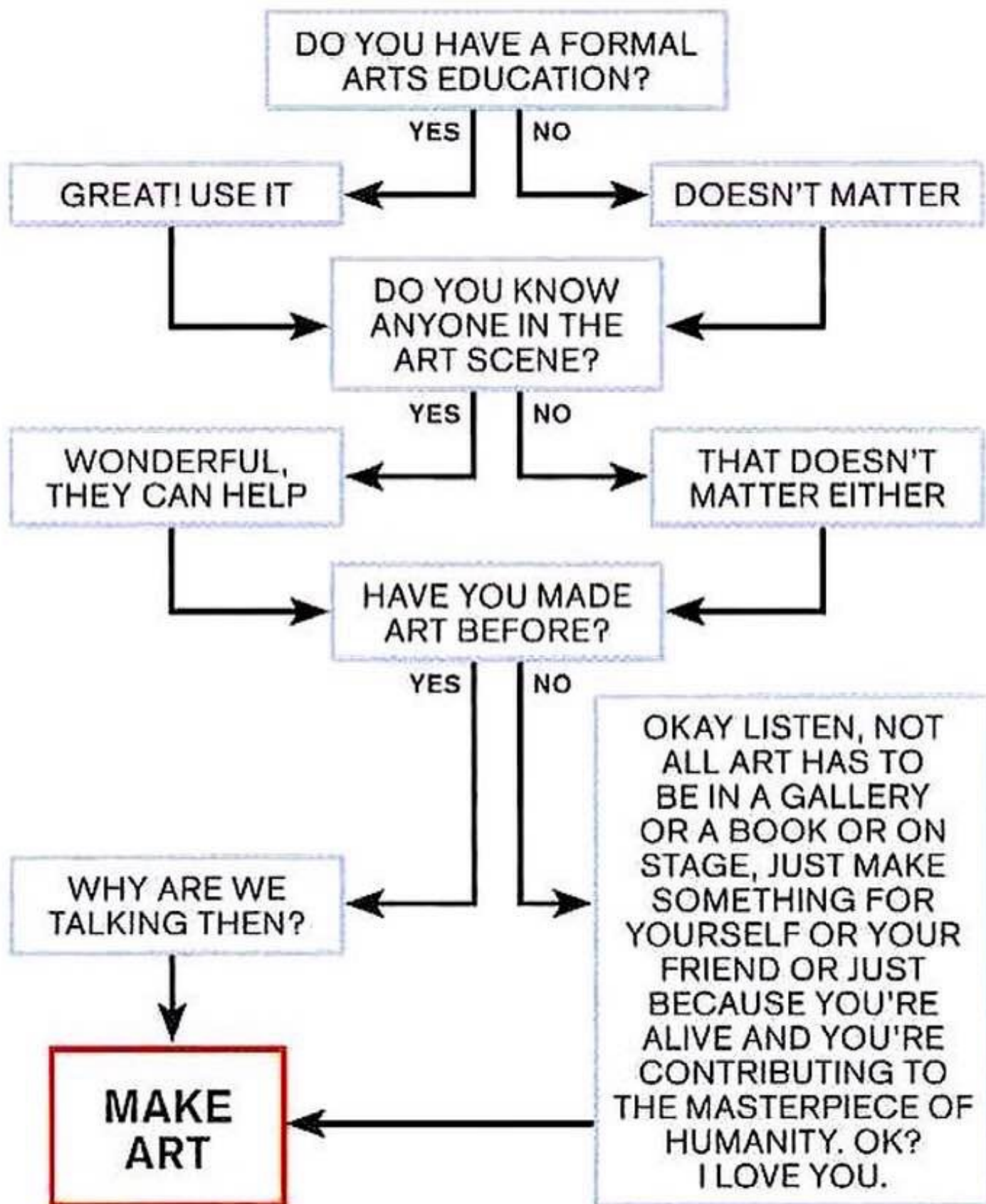
**Mike Thomas** - tried boiled linseed oil, Tung Oil, and Watco. **Jack Karstens** - used acrylic paint on the whole surface, sanded to the wood, then put on a high speed buffing finish. **Sue Bergstrand** - saw this stuff called "Unicorn stick" bought some. Its is a stain and glaze in one and has glitter in it as well.



**Chuck Levenson** - tried last months idea on how not to get blotchy and this finish looks kind of like ebony. **Kris Cohan** - used a technique picked up at the Eli Aversera demo. He used acrylic paints give a sort of Jerusalem stone appearance. Black paint as a base and then building up with three metallic paints. **Charlie Turner** - used Tung oil and used the 3M buffing pads to scuff it up. Then he used thinner, shellac, and BLO and it really shined up.

# Should I Make Art?

BY JOHN OSEBOLD







There are a lot of benefits to be gained from this activity

It provides meaning to what we do; creates enthusiasm; stokes innovation; promotes momentum; helps build culture and organizational spirit.

The more members we have participating, the more these benefits are expanded.

This is especially true for new members and those who have not engaged this activity yet.



Rick Bywater



Chuck Levenson



Don Frank



Sue Bergstrand



Ann Mellina



David Stallings



Anthony Harris

Jack Karstens





After painting my turned bowl black on the first step of another artistic adventure this morning, I got thinking.....

They say, "What ever floats your boat". I say, "What ever floats your spindle gouge."

We have all gotten into wood turning for different reasons. Some to turn the perfect shape from chunks of wood, and some to make artistic statements.

Either is fine. There are no Woodturning police. Yes there are constructive comments that can help us improve some skills; but in the end what you create is up to your own personal pleasure, not what you 'think' is expected as a Woodturner.

Some say bowls look better just millimetres thick, but I know my personal preference is a more more chunky look. Either one is not wrong. It is what you are happy with that counts. Some get their kicks from turning to paper thin and others not. Yes it is more skilful to getting paper thin walls and some love the challenge of doing that. But we are no longer at High School to try and achieve what a teacher 'says' is the best look.

Then we come to the part after our turning is done. Do we put a nice oil finish to show off the grain of the wood? Do we use a power tool to remove another 50% of the wood to produce random artistic holes? Do we use some pyrography or paint? Once again there are no woodturning/artistic police. It should be what gets your personnel lathe in your head whizzing that counts. After finishing our project there may be constructive comments that can help us improve some skills; but in the end it is your artistic adventure not anyone else's.

So in summing up, do what floats your spindle gouge. Have fun and love what you have achieved, either that being plain for encrusted. Wouldn't it be boring if we all wore the same clothes with the same colours? Evolution is what makes the world rejuvenate itself every season.

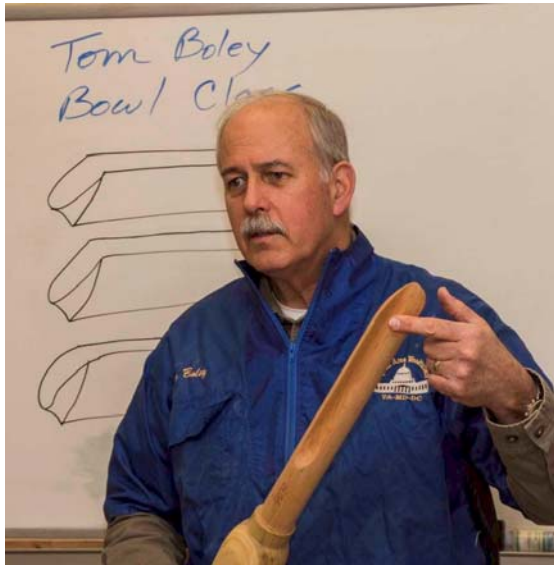
Be yourself and "Follow Your Bliss." I made this large artwork a few years ago that hangs on my lounge wall to remind me daily that life is short and we are a long time dead.

What are your thoughts... ?



Janet McDonald - New Zealand





**Tom Boley**  
 is coming to our Clubhouse  
 at 3189 Mercier St, KCMO  
 on  
**October 12th and 13th**  
 No club membership is required!

Tom Boley has started up two woodturning clubs since 1995, including the Flint Hills Woodturners in Wamego, KS. He has owned a custom architectural woodturning business but he retired to pursue his woodturning creativity. He is an inventive and gifted teacher. Tom has taught at the John C. Campbell School and demonstrated at clubs all over the country.



**Saturday, October 12th, \$25.00 Demo starts at 9:00am**

Bowl Medley -- standard, standard natural edge (NE), square NE, NE cut on the bias, log bowl, and possibly an owl. If time allows, chucking and sharpening considerations. The bowl medley will start slowly with demonstrating and talking through shaping the basic standard bowl. Once the basics are covered, each additional bowl demo, standard NE, square NE, bias, and log, will go fairly quickly with emphasis on the differences with each as we step up the difficulty level. Lunch is on your own.

**Sunday, October 13th, \$95.00 Hands-On starts at 9:00am**

Tom will guide the class through making one of his signature serving trays. All wood and wood lathes will be provided to the class. Beginners should have a basic knowledge of lathe and tool use. Tom will have some nice extra blanks for sale, for the fast turners that want to make two serving trays. No club membership is required. A standard toolset can be borrowed from the club. 10 students max. Lunch is furnished.

Both events will be held at the KC Woodturners Clubhouse at 3189 Mercier KCMO.

You can pay at the door for the Saturday demo or use the Paypal link below.

Reserve your place for the Sunday Hands-On, limited to 10 students, by using PayPal at:

<http://www.kcwoodturners.org/TomBoley/TomBoley2.html>

-or- mail a \$95 check to Kevin Neelley KCWT Treasurer, 14738 W 80th St, Lenexa KS 66215 and also email to Kevin Neelley at [treas@kcwoodturners.org](mailto:treas@kcwoodturners.org)





# MONTHLY ART AUCTION

KC Woodturner. **Jerry James**, has donated one of his woodturner art works to the KCWT July 8th 2019 Silent Art Auction. See the photos and description below. This is the sixteenth Silent Art Auction and we will have at every regular KCWT meeting. Each month there will be a Silent Art Auction with a piece donated by a different KCWT artist. Between meetings, the donated piece will be stored in the glass display case in the clubhouse common area. This sale supports your club and will, hopefully, be a great way to get member woodturning into the hands of other members and the community.

Pre-auction bids can be made before the September meeting by email to [mailto:@kcwoodturners.org](mailto:mailto:@kcwoodturners.org). The highest pre-auction bid will be posted on the KCWT website in the sidebar area. Bids will be shown as \$ amount and the last four digits of the bidder phone number: see [www.kcwoodturners.org](http://www.kcwoodturners.org).



Woods Used: Box Edler (from a local tree)

Dimensions: 3-1/2" diameter x 4" tall

Description: Jerry saved this wood from a neighbor's burn pile. The neighbor had just cut down the tree and Jerry noted some nice red color in the wood. The interior is painted shiny gold and the top is textured.





# Keep Turning with the AAW

Watching an expert turn a sphere makes it look so easy. But when you get back to your shop you discover it's not always such simple process. Making the perfect sphere takes both time and experimentation. There are numerous methods and it's important to find the process that works for you.

This week's picks offer ideas and insights on sphere-turning that we hope will be useful in your quest to make the perfect sphere. Keep your eye on the ball, it's in your court. Have a ball turning spheres!



**WOODTURNING: A journey where  
the learning and fun never end.**

**Please check our website ([www.kcwoodturners.org](http://www.kcwoodturners.org)) often  
and consider it your source for the most current  
information about club activities and events. It is also a  
comprehensive resource for all things woodturning.  
Bookmark it on your computer and create an App on your  
smart phone for quick, easy access anytime.**



# KANSAS CITY WOODTURNERS BOARD



**President**  
**Mike Thomas**  
86/835-0900



**V. President**  
**Kris Coyan**  
913-579-9152  
vp@KCWoodturners.o



**Treasurer**  
**Kevin Neelley**  
913-424-5691  
tres@KCWoodturners.



**Secretary**  
**Shaun Q. McMahon**  
913-908-0245

## At large Board Members



**Ann Mellina**  
817-905-2040



**Howard Russell**



**Sue Bergstrand**



**Anthony Harris**



**Jerry James**

**Please support those who support us**



**Woodcraft Supply**  
8645 Bluejacket Rd.  
Lenexa, KS 66214  
(913) 599-2800

### Store Hours

Mon, Tues, Wed, Fri 9 am—7 pm  
Thurs 9 am—9 pm  
Saturday 9 am—6 pm  
Sunday 9 am—5 pm

As a member of KC Woodturner, you receive a 10% discount except for on sale items and power tools. Make sure you present your KC Woodturner Card.

**Craft Supplies**  
1287 E 1120 South  
Provo, Utah 84606  
1-800-551-8876



Jeff Edemann offers KCWT members 10% off all items except sale items and power tools. Ask Jeff about any discount on power tools.



816-892-3398  
800-456-2148  
Fax 816-753-0250  
3001 Southwest Blvd.  
Kansas City, MO 64103-3616

10% discount on lumber and supplies to all KC Woodturners Chapter members when you present your membership card!



**KLINGSPOR**  
The Most Sanding Power for Your Money Since 1893!

