

WOODCHIPS 2019

Volume 25
Number 8

August

www.kcwoodturners.org

3189 Mercier Kansas City, Kansas 64111



September Challenge
Try a finish you have
never used before

**Check the Silent Auction
when you arrive**

September Demonstration
Kris Coyan is going to
demonstrate the making of his
desktop roulette game.



IRISH FEST IS ALMOST HERE



UP DATE: Thank you, thank you, and thank you to the 23 volunteers who are helping with this year's IRISH FEST.

If you are planning on finishing something for KCWT to sell at the Fest - either donated to KCWT or something you want to try and sell for you - those items need to be at KCWT .no later than Thursday August 29th during Open Shop. Prior to that, they can be brought to any Open Shop,

This is an important event for KCWT. Everyone who is part of the organization can participate by supporting our efforts to inform the community about the wonders of woodturning.

This support can be through attending the events that we participates in like the Irish Fest. And, this event is a great deal of fun. It starts on Friday August 30th at 5:00PM and goes till Sunday at 11:00PM. On Saturday and Sunday it opens at 10:00AM and each day it Closes at 11:00PM.

You can see all that is available at kcirishfest.com

So get your green on, or whatever color you prefer, and stop by and see us in Washington Park. We'll have a lathe on for you



Demonstration

This month's demo was enthusiastically provided by **Craig Arnold** who is the President of the Guild. He gave us a tremendous amount of information regarding finishing. It is a rather layered process. Trying to present all the information here would be futile. You can find it all on the website in the video of the meeting.



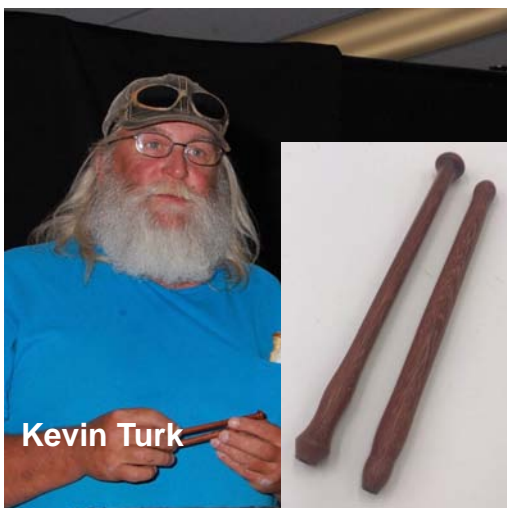
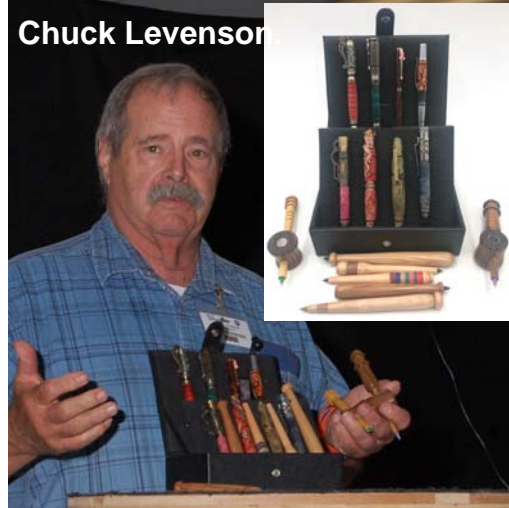
Efi at work



THE CHALLENGE

This month the Challenge was to make a pen based on the demo **Mike Thomas** provided last month. He made a stick pen using a Bic ink insert.

He challenged the members to make one of them or to make any other kind of pen to be donated to the Irish Fest.



Dan Carlson.



Linda Carlson



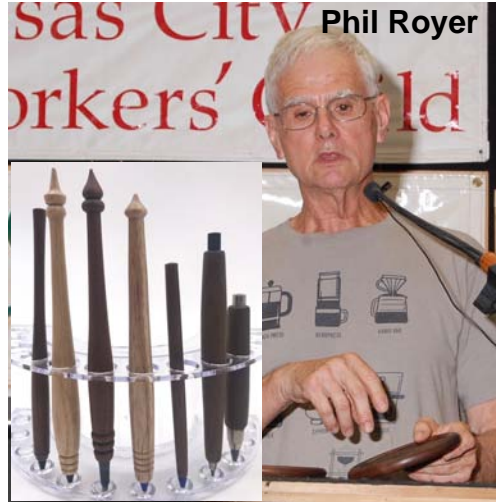
Anthony Harris



Ann Mellina



Phil Royer



Ed Jasczac



Jerry Darter's Deliveries To Ronald McDonald Houses

279 decorated tops
 30 baseball and bat tops
 44 undecorated tops for the kids to decorate
 48 wooden hearts by Jack Karstens for the kids to decorate.



There are a lot of benefits to be gained from this activity

It provides meaning to what we do; creates enthusiasm; stokes innovation; promotes momentum; helps build culture and organizational spirit.

The more members we have participating, the more these benefits are expanded.

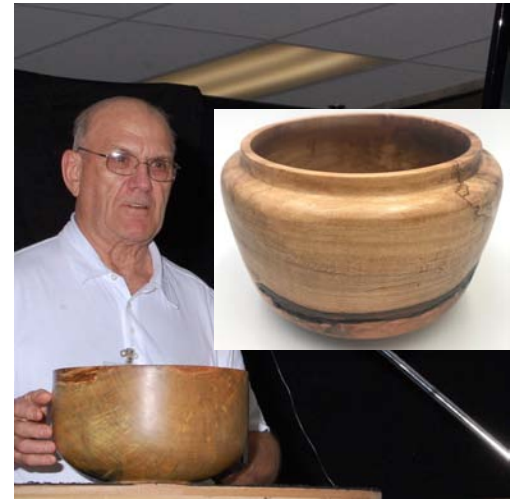
This is especially true for new members and those who have not engaged this activity yet.



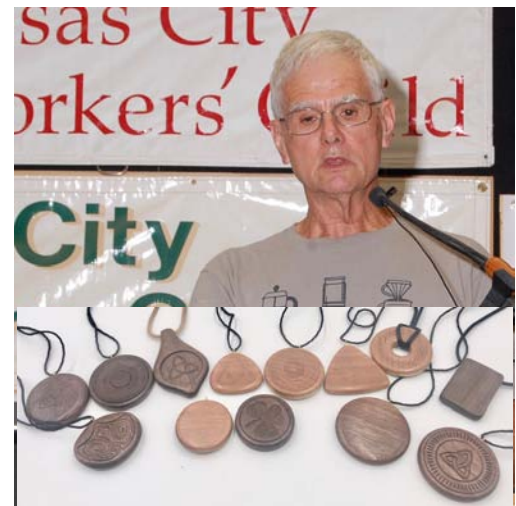
Mike Thomas. - used an old non-functioning cordless drill to make a hand chuck and some salt and pepper shakers. **Chuck Levenson** - he made a top box. An executive top box and he was pleased it worked out well. **Jerry McMaster** - just had to gloat over their trip to Wales and seeing their friend jJay Harriet-who had demonstrated at KCWT some time ago. He brought in these Celtic knots. They are fun to do but they do take some time. Lindsa brought a tool but was too cheap to buy the handle so he made one for her.



Rich McCartney. - bought in some turnings for the Irish Fest. They are bud vases and they have a glass insert so they can be used for dried or live flowers. He used six different types of woods. **Tony Giordano** - used a piece of Osage Orange that came from his front yard. There was a whole he used as a feature, filled it with epoxy, and used his usual epoxy and poly finish on it. **Rick Bywater** - One of these is another pinecone epoxy vessel and the other is a cherry pod.



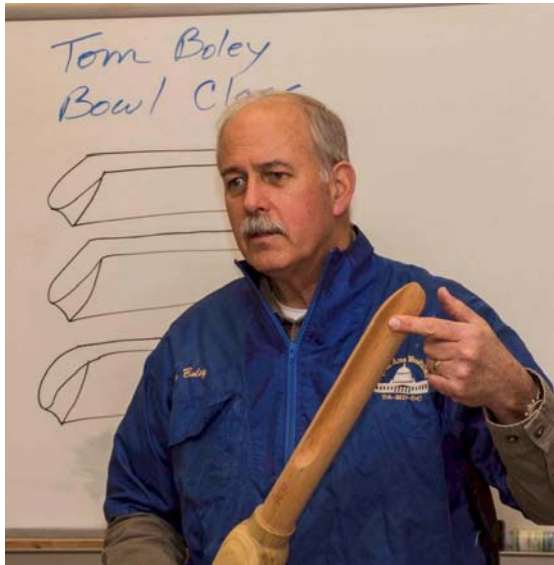
Ann Mellena - she made all kinds of things this last week and brought her came with her whole menagerie: frog, pug,, armadillo, fat mouse and a skinny one. They are simple to make and could sell at the Irish Fest.
Anthony Harris. - he said that he's b been making pawns and when he was turning the bases he made an (gulp) error so he decided to make them tops. Of course they are threaded. Hint-don't put sand in them.
Box Wood box tops. **David Stalling** - his first attempt at a Maple burl bowl and "it turned out pretty good."
 Also showed a Rino Skin shirt that he said is great to turn in - nothing sticks.



Dick Woodhouse - never asked about it. **Don Frank** - brought a piece that was turned out of bass wood and decorated with four spices of trout (that just doesn't seem right). The metallic finish is just copper paint with different patinas on it. He caught all four species last summer in Colorado. **Phil Royer** - had to leave early but he made these for the Irish Fest



Larry Dice - **Jeffrey Bollman** - **Kris Coyan** - We got short of time and there were some members who brought items and decided not to show them. We managed to get their picture though through the efforts of Ann Mellina.



Tom Boley
 is coming to our Clubhouse
 at 3189 Mercier St, KCMO
 on
October 12th and 13th
 No club membership is required!

Tom Boley has started up two woodturning clubs since 1995, including the Flint Hills Woodturners in Wamego, KS. He has owned a custom architectural woodturning business but he retired to pursue his woodturning creativity. He is an inventive and gifted teacher. Tom has taught at the John C. Campbell School and demonstrated at clubs all over the country.



Saturday, October 12th, \$25.00 Demo starts at 9:00am

Bowl Medley -- standard, standard natural edge (NE), square NE, NE cut on the bias, log bowl, and possibly an owl. If time allows, chucking and sharpening considerations. The bowl medley will start slowly with demonstrating and talking through shaping the basic standard bowl. Once the basics are covered, each additional bowl demo, standard NE, square NE, bias, and log, will go fairly quickly with emphasis on the differences with each as we step up the difficulty level. Lunch is on your own.

Sunday, October 13th, \$95.00 Hands-On starts at 9:00am

Tom will guide the class through making one of his signature serving trays. All wood and wood lathes will be provided to the class. Beginners should have a basic knowledge of lathe and tool use. Tom will have some nice extra blanks for sale, for the fast turners that want to make two serving trays. No club membership is required. A standard toolset can be borrowed from the club. 10 students max. Lunch is furnished.

Both events will be held at the KC Woodturners Clubhouse at 3189 Mercier KCMO.

You can pay at the door for the Saturday demo or use the Paypal link below.

Reserve your place for the Sunday Hands-On, limited to 10 students, by using PayPal at:

<http://www.kcwoodturners.org/TomBoley/TomBoley2.html>

-or- mail a \$95 check to Kevin Neelley KCWT Treasurer, 14738 W 80th St, Lenexa KS 66215 and also email to Kevin Neelley at treas@kcwoodturners.org



MONTHLY ART AUCTION

KC Woodturner. **Kent Townsend**, has donated one of his woodturner art works to the KCWT July 8th 2019 Silent Art Auction. See the photos and description below. This is the sixteenth Silent Art Auction and we will have at every regular KCWT meeting. Each month there will be a Silent Art Auction with a piece donated by a different KCWT artist. Between meetings, the donated piece will be stored in the glass display case in the clubhouse common area. This sale supports your club and will, hopefully, be a great way to get member woodturning into the hands of other members and the community.

Pre-auction bids can be made before the September meeting by email to mailto:@kcwoodturners.org. The highest pre-auction bid will be posted on the KCWT website in the sidebar area. Bids will be shown as \$ amount and the last four digits of the bidder phone number: see www.kcwoodturners.org.



Artist: Kent Townsend

Title: Figured Natural-Edge Ash Bowl

Woods Used: Ash (from a local tree)

Dimensions: 10-1/2" diameter x 6" tall

Description: Kent turned this bowl from the trunk of a large local ash tree. Note the figure in the side view photo. The natural edge turned out very good.

KCWT HAS A WONDERFUL PROBLEM

It has gotten to the point where all the lathes are being used during open turning times. Sometimes we have turners waiting on a lathe to use. There seems to be more and more of our membership wanting to take advantage of the lathe use, the camaraderie, and the learning that takes place - fantastic.

Solution

We need to be open more times. And we are. We have had a number of members come forth willing to open and close the shop on additional days.

The KCWT Clubhouse is now open 3 Wednesday evenings for turning (in addition to Saturday mornings and Thursday evenings). We're open the 1st, 2nd, and 4th Wednesday of every month. We will never be open the 3rd Wednesday because that is the Guild's Regular meeting night.

Our Club's original lease included 3 Open Lathe half-days. The Club's Board decided to pay extra rent to have Open Lathe for more half-days. Now we have 13 Open Lathe half-days instead of just 3. Volunteers open the clubhouse for Open Lathe, stay available for questions during the open time, then close the clubhouse back up. The volunteers are not intended to be trainers. They have their own projects. The Club requests that all Open Lathe attendees donate a couple dollars per use day into the Donation Bowl to help defray extra rent and equipment wear and tear. The club also requests that Open Lathe attendees thoroughly clean their lathe area after use as well as the other tools used, like the bandsaw, drill press, and grinder and empty the trash cans and vacuum cleaners. Clean up your shavings if you use the chainsaw in the parking lot. Please leave the clubhouse lathe room cleaner than you found it. Thank you from your Club.

Clubhouse Open Lathe Openers

Saturday Morning 8:30am-Noon

- 1st David Alexander (816-753-1940)
- 2nd Shaun McMahon (913-908-0245)
- 3rd Jack Karstens (913-897-4301) and Efi Kamara (913-451-4511)
- 4th Shaun McMahon (913-908-0245)
- 5th Jack Karstens (913-897-4301) and Efi Kamara (913-451-4511)

Wednesday Evening 5:30pm-9:00pm

- 1st Marc Turner (913-963-7219) and Leon Butler (913-568-9843)
- 2nd David DeSimone (816-686-3348) and Jon Gathright (913-515-8929)
- 3rd No Open Lathe – KC Woodworkers Guild Monthly Meeting
- 4th Mark Inmon (816-368-1775), Charlie Turner as emergency Opener (816-903-1542)

Thursday Evening 6:00pm-9:00pm

- 1st Jerry Lehane (913-707-9103) and Anthony Harris (913-648-2027)
- 2nd Jerry Lehane (913-707-9103) and Anthony Harris (913-648-2027)
- 3rd Aron Crittendon (417-593-1218) and Don Grimes (913-962-2060)
- 4th Kris Cohan (913-579-9152) and Don Grimes (913-962-2060)
- 5th Aron Crittendon (417-593-1218) and Don Grimes (913-962-2060)



Keep Turning with the AAW

KCWT Members who are also AAW Members

You have the choice to help chart AAW's course for the future. Having a voice by casting your vote for the leadership of AAW is an often-overlooked benefit of membership in AAW. And we have made the process of casting ballots online extremely convenient. It will only require a few moments of your time.

Comprised entirely of volunteers, the AAW Board of Directors represent your interests as members of our woodturning community. They dedicate countless hours to the stewardship of AAW and devote their full attention to the present matters of importance to members, while also looking forward to meeting the challenges of the future.

To vote...

you will need to be signed in to the AAW website and will need to know your member number.

Voting ends August 31, 2019. Why wait? If you have any questions or would prefer a paper ballot, please contact us at 877-595-9094 (toll free) or memberservices@woodturner.org.

**WOODTURNING: A journey where
the learning never ends.**

Please check our website (www.kcwoodturners.org) often and consider it your source for the most current information about club activities and events. It is also a comprehensive resource for all things woodturning. Bookmark it on your computer and create an App on your smart phone for quick, easy access anytime.

KANSAS CITY WOODTURNERS BOARD



President
Mike Thomas
86/835-0900



V. President
Kris Cohan
913-579-9152
vp@KCWoodturners.o



Treasurer
Kevin Neelley
913-424-5691
tres@KCWoodturners.



Secretary
Shaun Q. McMahon
913-908-0245
editor@KCWoodturners.or

At large Board Members



Ann Mellina
817-905-2040



Howard Russell
913-851-1752



Sue Bergstrand
816-363-5465



Anthony Harris
913-648-2027



Jerry James
913-648-2027

Please support those who support us



Woodcraft Supply
8645 Bluejacket Rd.
Lenexa, KS 66214
(913) 599-2800

Store Hours

Mon, Tues, Wed, Fri 9 am—7 pm
Thurs 9 am—9 pm
Saturday 9 am—6 pm
Sunday 9 am—5 pm

As a member of KC Woodturner, you receive a 10% discount except for on sale items and power tools. Make sure you present your KC Woodturner Card.

Craft Supplies
1287 E 1120 South
Provo, Utah 84606
1-800-551-8876



Jeff Edemann offers KCWT members 10% off all items except sale items and power tools. Ask Jeff about any discount on power tools.



816-892-3398
800-456-2148
Fax 816-753-0250
3001 Southwest Blvd.
Kansas City, MO 64103-3616

10% discount on lumber and supplies to all KC Woodturners Chapter members when you present your membership card!