

# WOODCHIPS - 2017



## MARCH



Volume 23 Number 3

**April Challenge:**  
Off set turning of some kind

**Look at the silent auction items when you come into the meeting.**  
**Follow KCWT on Facebook**

**April Demo**  
Jerry Darter and the top Guys



**June 23-25** is not that far away  
Go to the AAW website to register  
You can volunteer there too



**We really do need you.**



## 2017 AAW International Symposium

**We need you to participate by:**

attending the symposium as a participant  
donating a Beads of Courage Box  
volunteering to help at the Symposium  
donating a bowl or two to Bowls for kids  
by volunteering to help





Beads of Courage has had an increase in interest from generous wood artists kind enough to donate their lidded bowls and boxes to our Beads of Courage members. With the program growing exponentially, there is an even greater need for wooden boxes. Children and young adults are finding strength in a whole new way by receiving handcrafted beautiful boxes. The gift of having a safe place to keep hard-earned Beads of Courage can bring a sense of comfort to the heart and is a beautiful way to honor the strength and courage of children battling serious illness.



## Wood Artist Guidelines



Beads of Courage receive thousands of beads. It is desirable for the boxes to hold them all. As a result, turned or rectangular lidded boxes need to be large. Larger the better! Recommended interior dimensions for turned boxes are 6" diameter and 5" height. Recommended interior dimensions for flatwork boxes are 4" x 6" x 4".



The base needs to be wide enough so that the box is stable. The lids should be easy for small or ill children to remove or lift. Any finials should be easy for a small child to grasp and not too elaborate so they don't break.



Finishing of boxes is extremely important. The members who receive these boxes are susceptible to germs/infections. They need to be sealed so as not to harbor mold. Please take the time to ensure you are using a safe finishing process that does not contain toxic materials. Also do not use finishes like linseed oil that take a long time to outgas.

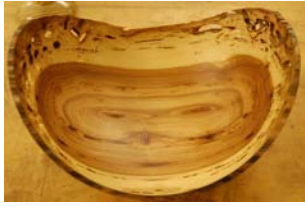


All kinds of wood are beautiful! Please refrain from painting Beads of Courage boxes. Instead, highlight the beauty of the wood with clear varnish, a stain, and/or burning.



It is nice if you can personalize your donation. Marking your name or initials, type(s) of wood, and date on the box bottom is one way. It is also nice to include a personal note of encouragement, business card etc. inside the box.





# BOWLS FOR KIDS



The AAW is very committed to making sure that the community, as a whole, receives a benefit from having the Symposium in their city. One of the ways that it does that is through the Bowls for Kids Program.

Woodturners make bowls and donate them to the program. These bowls are then placed in a specific area of the Instant Gallery at the Symposium. Attendees donate \$25.00 to enter the area and pick any bowl of their choice to take home with them. The bowl can be any size and plain or decorated. The turner is limited only by imagination.



The money that is raised from this event is donated to a local charity. This year, the Local Symposium Committee chose...



Helping children with physical & mental disabilities reach their full potential for 80 years.

All of the money raised will stay here in Kansas City to help variety. The bowls that are not chosen will be given to Variety to use in their future events.

**WE NEED YOU TO MAKE A BOWL - OR TWO**



# MEETING

## DEMONSTRATION

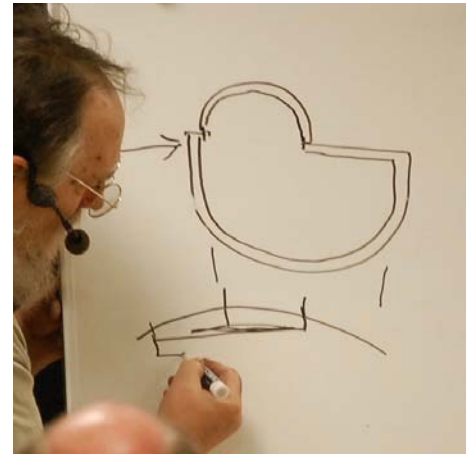


The secret to this turning is the two tenons that he puts on the foot of the project. He is also very stingy with wood - so he uses a center with no point because he doesn't want to waste wood and uses a step center for the same reason. He cuts the wood close to the dimensions he is making the project - less waste. For this demo he used Macassar ebony and olive wood. He used a dovetail chuck and the first tenon needed to be twice as tall as you would normally make it as it is going to be two tenons. He shifts the block between centers to create the second tenon using one of the holes from the step center as his new center.

Then he uses the original tenon and hollows the box - keeping the hole as small as possible - using a round nose scraper (you could use a spindle gouge) and **Kevin Neely's** angle tool.

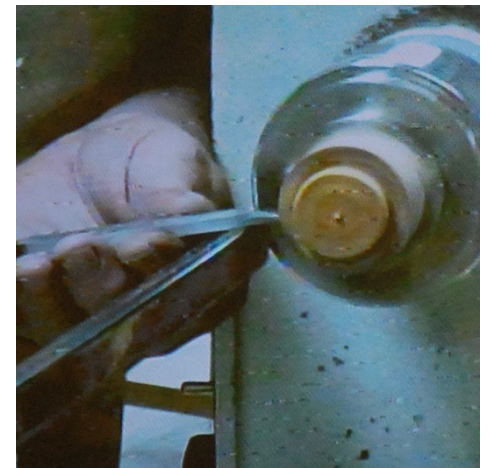


One of the techniques he stressed was that he is not aggressive, does not press hard, takes a little off but stays in contact with the wood on the inside. Be gentle when making the cuts in hollowing. Take your time in making it smooth on the inside.



Any shape to be put on the top needs to be done now. He put a slight bevel on the top. Used a negative rake scraper (one of turning's long time secrets). He started sanding at 220 because with some hard woods a lower grit puts grooves in the wood that just never come out. Mark #1 jaw and then it can be removed from the chuck and put on the other tenon. Then the opening for the top can be cut. Rounds the front of the hole in preparation for chasing a thread. (Can also make it a friction fit lid.)

He used 16 tpi to chase the threads - his favorite. He doesn't need a relief cut for the threads and the entire box is his relief.



He next chucked the olive wood he used to make the lid for the box. He hollowed the inside of the top first and then prepared it to take a thread. With the threading complete he undercuts the thread so he can thin the lid out a little more, then puts the unfinished lid on the box, and puts the box back on the chuck so that he can finish the lid. With the lid complete, he made a jam chuck so that he could finish the bottom of the box. It helps to have a rubber glove handy to remove the box from the jam chuck.







For those of you who missed seeing this demo, or those who want to see it again, you can see this done at the AAW Symposium in June. Anthony - the only local turner at the Symposium - will be doing this twice, once on Saturday and once on Sunday.

The challenge for next month is an intentionally off set- turning of some kind.



**HAVE WE  
GOT A DEAL  
FOR YOU !!!!!**

## **AAW VISION 2020**

New Members - those never an AAW member - can get 50% off the membership fee of \$60.

**Special rate available only during the exclusive sign up period from April 1 to June 30, 2017**

Join AAW at the reduced \$30 rate at <http://tiny.cc/AAWNewGen>

AAW members are able to attend the Symposium at a reduced rate.

Attendance is growing for Open Shop - please remember to sign in and we are falling a little short of the extra expense we are incurring for the open days. It is really helpful if you can put a few dollars in the collection bowl so that we can put it to rent and repairs. Thank you.

**Kevin Neelley** bought some new tools for the shop - texturing tools and a ring tool.

Please use the website [kcwoodturners.org](http://kcwoodturners.org) as your go-to source for all information related to what the club is doing.

We have a special monthly meeting - July - coming up with Lyle Jamison. It will be a live remote training bringing him right into our meeting.



**E. David Burks**

The Challenge for this month was to make something with a design on the bottom using some of the techniques presented by **Stuart Shanker** last month



**Chuck Levenson**



**Ed Jaszczak**



**David Blair**



**Aron Crittendon**

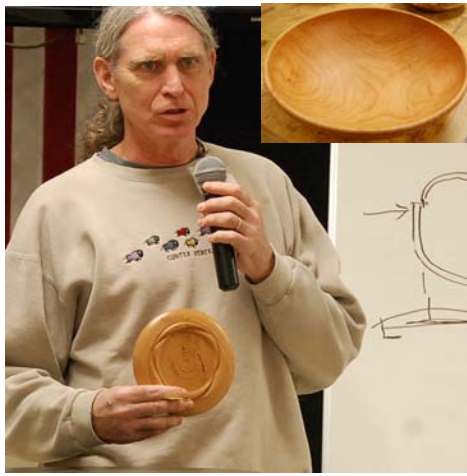


**Phil Royer**



**Sue Bergstrand**  
she won the challenge tool





**Jack Karstens**



**Kris Cohan**



**Mike Thomas**



**Anthony Harris** brought a number of platters that he turned from a pin oak. He said that he did something he'd never done before and that was to not even think about turning a bottom on them and he is pretty happy with the results. **Joe Vega** said that he was making some bandsaw boxes and wondered what he could do on the lathe and made a drawer for one. He also made a game where the stick gets flipped and you're suppose to stop it when it is on its end. Pretty tough.







**Howard Russell** wanted to do something unique for Christmas for his daughter. He used some hard maple from a table top and glued it up. Had fun turning it really fast. **Ed Jaszczak** turned him onto the iridescent paints (can get from the UK) and they were really fun to use. It seems to work best when it is put on a black background. **Perry Walters** this particular tree had been dying for about four years, likes to use turquoise to full voids and also uses other things he finds around the farm to fill voids as well - like deer antlers. He also uses about \$2 worth of gold in each piece. **Andrew E. Mitchell** brought a group of clicks set in some interesting turnings. When you do one it is just as easy to turn a bunch. He used forstner bits go turn out for the candles holders and the clocks. Had to make a jig to keep the piece from turning when he was drilling the hole for the clock.



**Mike Thomas** has been trying to make an "emerging bowl." The hardest thing was working up the courage to turn it. "When it is going about 2300 RPM it gets pretty interesting." He held it on the faceplate with a paper glue

**For those of you who have never been in the AAW, now is the time to join.**

Show and Tell is that part of the meeting where anyone can bring something that they are working on or have finished to enlighten the membership about the activity of their turning. If you have questions about your piece - good time to ask for help.

It's the stories that we tend to remember and yours is as important and significant as anyone's.



**Participate**

**If you have never been to this event you owe it to yourself to go. You will see some incredible carved wood items, the kind that have a person think/say "how'd that get done that way?"**



## **2017 Elegance in Wood Show and Sales**

at John Knox Pavilion  
520 N.W. Murray Road  
Lee's Summit, MO 64081



**March 24, 2017 10 a.m. – 6 p.m.**

**Meet carvers** from the Mid-west as they compete for our 2017 Best of Group, Best of Show and the Grand Champion Awards. Cash awards range from \$25 to \$350.

**Take part in the on-going Raffle** each hour of the show starting at 11:00 a.m. on Friday. Participants must be present to win.



**Be inspired by exhibitors' creations** which include a variety of wood carvings, scroll-saw creations, turned vessels, intarsia, pyrography, jewelry for sale.

**Interested in carving** – you can purchase tools, supplies, basswood, rough outs, books and more from our vendors.

**March 25, 2017 10 a.m. – 5 p.m.**

**Purchase Awards – 10:30 a.m.** Exhibitors place carvings worthy of a category value on display. Category Sponsors select the carving of their choice. The public is welcome to participate in the purchase of the remaining carvings.

**Recognitions and awards given at 11:00 a.m.** to the Best of Group, Best of Show, Second Best of Show and 2017 Grand Champion.

### **Sponsored by:**

The Kansas City Woodcarvers a Special  
Interest Group of the KC Woodworkers  
Guild and

Krantz Wood Sales,

Moore Roughouts & Designs,

Nibsburner,

The Woodcraft Shop,

Woodcraft Supply,



**Admission: \$5, (two free raffle tickets with a paid admission)**  
**Scouts in Uniform and Children under 12 with an adult - FREE**



## AAW will launch exciting new incentives on April 1.

### 1) AAW 50% dues incentive for chapter members who are new AAW members:

- Local chapter members who have never been AAW members will have the exclusive opportunity to become AAW members for one year for just \$30, a 50% reduction on the \$60 rate. Only AAW chapter members who have never been AAW members are eligible, and the special rate is available only during the exclusive sign up period from April 1 through June 30, 2017.

### 2) New AAW learning tools to be introduced April 1:

- Woodturning FUNdamentals Online**, an easy-to-use integrated online learning experience designed for new turners and those who would like to build woodturning skills. The site complements the digital Woodturning FUNdamentals publication.
- Discover Woodturning Online**, a new web-based resource loaded with introductory and descriptive information about the art and craft of woodturning, designed to educate the general public. This is your tool, for your chapter's new turners. Contact the AAW office to find out the options

## 2017 AMERICAN ASSOCIATION SYMPOSIUM

### REGISTRATION IS OPEN

**Log into the site, click on events**



You do not need to be a member of the AAW in order to volunteer to help at the Symposium. You will be able to help in a variety of areas - you will not, however, be able to attend any of the demonstrations.

**AAW** | AMERICAN ASSOCIATION  
OF WOODTURNERS

**Keep Turning**  
with the AAW

## Kansas City Woodturners Board

### President

**Mike Thomas**

816-835-0900

[pres@KCWoodturners.org](mailto:pres@KCWoodturners.org)

### V. President

**Jack Karstens**

913-897-4301

[vp@KCWoodturners.org](mailto:vp@KCWoodturners.org)

### Secretary

**Shaun Q. McMahon**

913-908-0245

[editor@KCWoodturners.org](mailto:editor@KCWoodturners.org)

### Treasurer

**Kevin Neelley**

913-424-5691

[tres@KCWoodturners.org](mailto:tres@KCWoodturners.org)

## At Large Board Members

**Mike Erickson**

913-829-6534

**Kris Cohan**

913-579-9152

**Sue Bergstrand**

816-363-5465

**Anthony Harris**

913-648-2027

**Please support those who support us.**



### Woodcraft Supply

8645 Bluejacket Rd.

Lenexa, KS 66214

(913) 599-2800

### Store Hours

Mon, Tues, Wed, Fri 9 am—7 pm

Thurs 9 am—9 pm

Saturday 9 am—6 pm

Sunday 9 am—5 pm

As a member of KC Woodturner, you receive a 10% discount except for on sale items and power tools. Make sure you present your KC Woodturner Card.

### Craft Supplies

1287 E 1120 South

Provo, Utah 84606

1-800-551-8876



Jeff Edemann offers KCWT members 10% off all items except sale items and power tools. Ask Jeff about any discount on power tools.



816-892-3398

800-456-2148

Fax 816-753-0250

3001 Southwest Blvd.

Kansas City, MO 64103-3616

10% discount on lumber and supplies to all KC Woodturners Chapter members when you present your membership card!