

# WOODCHIPS - 2016



## MAY



**May Challenge:**  
A bowl of some kind but  
offset is best

**Look at the silent  
auction items when you  
come into the meeting.  
Follow KCWT on Facebook**

**May Demo**  
**Andrew Mitchell**  
will present on clock  
parts.



KCWT has guardian angels who take care of things. Sometimes parts need to be ordered and installed and that's just what Rich McCartney and Kevin Neelley did. Rich got the casters for the Jet lathe and the two of them put them on - no small feat - during Open Turning on 4/30/16.

## The Meeting



Open shop times are growing: please sign in and help with the extra rent for the extra sessions, a few dollars is helpful. Beginning woodturning class is full but a new one will start in August. If you have an interest in learning specific skills, let us know so we can think about the types of classes to offer. Annual picnic and the Maker Faire are coming up -

**CHECK THE WEB SITE OFTEN.**

# DEMONSTRATION

This month the demonstration was provided by Howard Russell, a long time member of KCWT. He treated us to some multi-axis turning in making a bowl.



He demonstrated the making of a bowl with a hemispherical bottom so that it rocks around. He used a piece of recently cut Ash. He started by rounding off the wood with a bandsaw first. Then he chucked it up using a stronghold with a drive center in the middle of it. Square-off the bottom. Offset the center about a quarter of an inch. Of course you can do it more but then there is a lot of swing and it makes the turning more difficult to say nothing of more exciting. He said that he likes turning green wood as it is much easier than dry wood. Then cut a tenon and make sure that the chuck is going to close almost all the way when the wood is mounted in it. That way you know you have a good hold on the wood.



He used a forstner bit to drill a hole in the bowl to make the hollowing out easier. Then he used a scraper to complete the hollowing out of the bowl. After the hollowing has been completed the piece is reversed so that the bottom can be completed. He accomplished this task by using a Longworth Chuck.

**The challenge for the June meeting is to make a bowl and if offset so much the better but it is not a requirement.**



# The Challenge



The challenge this month was to make a hollow form in two pieces and then do outside decoration such that the glued joint is not visible. This was based on the demonstration provided by **Rick Bywater** last month. Many members responded to the challenge this month. **Reminder**, those who participate in all the challenges for a year qualify for the Iron Turner award presented at the December meeting.

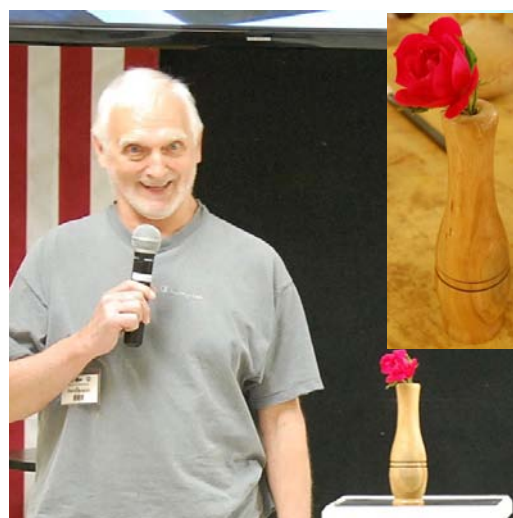


**Jerry McMasters** brought an unfinished wine bottle and when it is finished the seam will not be visible. **Ken Moberg** brought two pieces, one out of walnut and another one out of something not pronounceable. Doing things prior to going to work might mean that something doesn't get finished. That was the case with **Sue Bergstrand** whose turning contained all the elements but would be finished after the meeting.

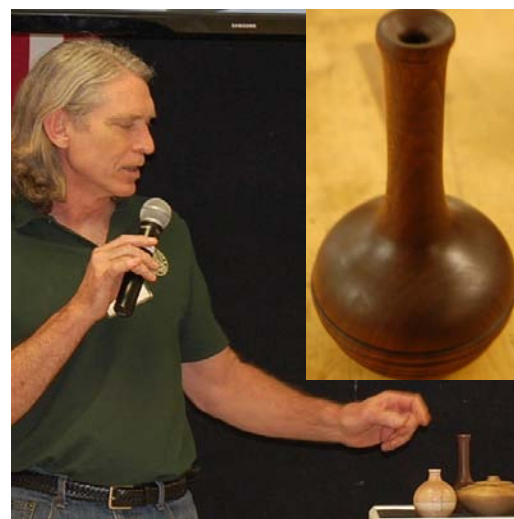




A segmented piece with an indian design is what **Ed Jaszczak** brought in. **John Veerkamp** brought in a bottle with the seam in the bottom and carved the tip. **Chuck Levenson** brought in his two piece bowl.

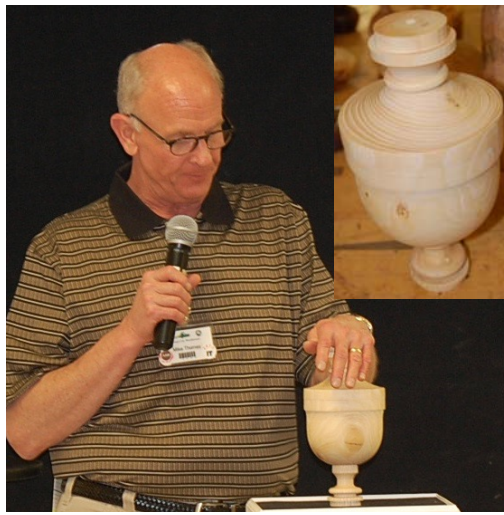


Taking Anthony's class helped **David Blair** make his piece. He said that he found it easier to turn the outside then the inside. **Phil Royer** used a piece of walnut to make his vase and used Watco oil on it and then buffed it. A piece of cherry he cut down in his back yard and he used



**Stuart Shanker** brought in his version of the little tea pot - chunked in four parts - spalted maple, walnut, and mahogany. Usually with a demo the piece isn't finished so **Rick Bywater** took home the one he was working on in the demo and completed it a sort of whimsical geni bottle. Jack Karstens brought in three pieces (because he could)





**Kris Coyan** sees himself as a sort of follow the directions person, so he did and it turned out just fine. He used green sycamore. **Mike Thomas** also took Anthony's class - blew up the first one and does understand that the inside needs to be done first but... **Anthony Harris** brought in a piece made from the bit cherry tree we cut down. He used "V" cuts to hide the joint.



**Shaun**, camera shy, **McMahon** brought a piece in turned from American elm with african black wood and walnut as accents.

# SHOW AND TELL



Ya just never know who will show up unexpectedly - like **Bobby Coyan** home from college and his woodworking studies.







**Bill Kuhlman** brought in a couple pieces, one finished with a blowtorch and food coloring and the bowl is a burl of Red Birch - thrice turned. He finished it with five coats of lacquer. Lots of turners seem to get wood from their neighbor's backyard and **Tony Giordano** is no exception. Got this piece of hackberry, it cracked, filled it with epoxy, and finished with a clear lacquer. **Sue Bergstrand** demonstrated at the Woodworking show and didn't think the stem was right on her vase so she made another one and, this time, it was right.



**Rich McCartney** used a piece of cocobolo to make this vase and used a glass insert to make it usable for real flowers. He used tongue oil as the basic finish. Based on last month's demonstration and the use of beads, **Harold Haines** thought that someone needs to make the tools so he made three different sizes of beading tools out of drill bit shanks. Growing out of the native American basket, **Rick Bywater** brought in a sunflower. He also brought in a decorated bowl, and made use of milk paint (black) and Generals high performance water base finish to keep the lightness of the wood.

# Maker Faire® Kansas City

THE GREATEST SHOW  
( & TELL ) ON EARTH

**JUNE 25 & 26, 2016**

Saturday 10AM - 6PM  
Sunday 10AM - 5PM

AT HISTORIC  
**UNION  
STATION**





**Jack Karstens** brought in a segmented bowl - a combination of walnut, cherry, and maple. **Efi Kamara** used a CNC machine to put the Star of David in the bottom and inserted maple into the cuts. The cherry came from a neighbor, of course. Efi and Jack are a good example of what can happen when a couple people collaborate. An egg, a stand and thou -



Whenever he teaches a bowl class he turns three bowls and this time **Anthony Harris** completed them - all finished with watco. **Harold Haines** just had this piece of tree hanging around for awhile, turned it outboard - very carefully - both sides usable. **Kris Cohan** had a piece of pear hanging around after a tree fell down over a year ago - who doesn't - and was able to capture the feather and used 4 layers of salad

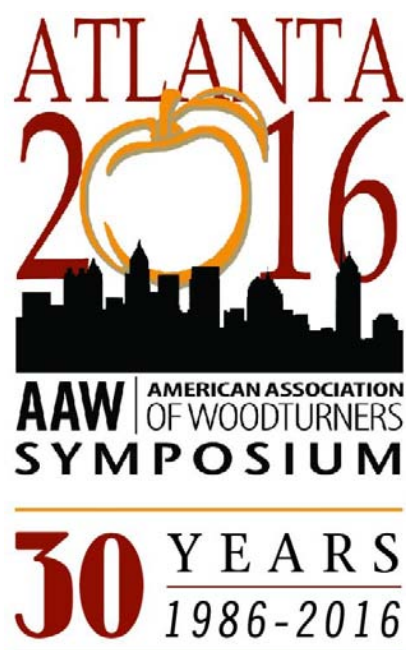


**Shaun McMahon** made a goblet out of pine, epoxy on the inside and buffed on the outside.

We have had an increasing number of members participating in the Challenge and Show and Tell. This is GREAT. It keeps members turning and gives us all an opportunity to see what members are doing and we all learn.



We need you help to demonstrate and to staff the booth. Remember, in order to actually turn, you **MUST** be a member of the AAW. (See guest membership below) There will be sign-up sheets at the meeting on June 13.



**REMEMBER** - We are hosting this event here - in Kansas City - in 2017 and we are going to need your help. More information will be coming in future issues of Woodchips.

**AAW** | AMERICAN ASSOCIATION  
OF WOODTURNERS



**PLEASE**



## New AAW Guest Membership Program

We have a *Guest* membership program for you to offer chapter members who are not yet AAW members. By signing up for a complimentary *Guest* membership, club members can have limited access to AAW member resources for a full 60 days. They'll be able to explore what the AAW has to offer, kick our tires, and hopefully decide to become full-fledged AAW members and benefit from everything the AAW has to offer.

## If you are a member of the AAW, you can get these tips in the May issue of Woodturning FUNDamentals

### Tips

- Why should I use sanding sealer? Jack Morse
- Repairing Small Cracks with CA Glue, Linda Bohl-Berry
- Sandpaper Packets, Janice Levi
- Ask the Expert: Twice Turned Bowls, John Lucas
- Ask the Expert: How do I turn legs to be the same? Janet Collins
- Video: Make a Natural Edge Bowl with a Stitch by Jerry Kermode, a full demonstration from the 2015 AAW Symposium in Pittsburgh (TRT 1:16:40).

### KCWT BOARD

#### President

Mike Thomas  
816-835-0900

[pres@kcwoodturners.org](mailto:pres@kcwoodturners.org)

#### Vice-President

Rich McCartney  
913-317-6561  
[vp@kcwoodturners.org](mailto:vp@kcwoodturners.org)

#### Treasurer

Kevin Neelley  
913-492-6522  
[treas@kcwoodturners.org](mailto:treas@kcwoodturners.org)

#### Secretary

Shaun Q. McMahon  
913-908-0245  
[editor@kcwoodturners.org](mailto:editor@kcwoodturners.org)

#### AT LARGE

Mike Erickson  
913-829-6534

Anthony Harris  
913-648-2027

Ken Moberg  
816-447-1665

Kris Coyan  
913-579-9152

Rick Bywater  
913-897-0765

## Please support those who support us.



**Woodcraft Supply**  
8645 Bluejacket Rd.  
Lenexa, KS 66214  
(913) 599-2800

**Store Hours**  
Mon, Tues, Wed, Fri 9 am—7 pm  
Thurs 9 am—9 pm  
Saturday 9 am—6 pm  
Sunday 9 am—5 pm

As a member of KC Woodturner, you receive a 10% discount except for on sale items and power tools. Make sure you present your KC Woodturner Card.

**Craft Supplies**  
1287 E 1120 South  
Provo, Utah 84606  
1-800-551-8876



Jeff Edemann offers KCWT members 10% off all items except sale items and power tools. Ask Jeff about any discount on power tools.



10% discount on lumber and supplies to all KC Woodturners Chapter members when you present your membership card!

816-892-3398  
800-456-2148  
Fax 816-753-0250  
3001 Southwest Blvd.  
Kansas City, MO 64103-3616