

# WOODCHIPS - 2016



## JANUARY



**February Challenge:**  
Something that you  
turned and was chuckled  
in an odd/novel way.

**Get your raffle tickets  
when you come into the  
meeting**  
**Follow KCWT on Facebook**

**February Demo**  
Jerry McMaster will be  
showing how to do thin  
walled turning.

**Your 2016 dues can be paid to Kevin via cash, check, or PayPal and they can also be paid on-line on the website which has more content now than it did the last time you looked at it.**



There are many reasons why **The Kansas City Woodturners** is such a great group. We have open turning EVERY Saturday and during that time if you want to turn there are 13 lathes you can choose from, lots of tools you can practice with, and a wealth of information you can tap because of all the talent that shows up. We have Thursday night turning on the 2nd and 4th Thursdays for those who can't get there on Saturday. Our monthly meeting is on the second Monday of the month where we have a demonstration and afford opportunities for every member to show off during the Challenge and Show and Tell as well as the ability to tap the talents of those present. **KCWT** is also involved with bringing professional turners in for demonstrations - Tom Boley will be here in February, Carl Jacobson in October, and Ashley Harwood is scheduled for February of 2017. Outside activities also provide events where we can demonstrate our skills and have some fun such as The Maker Faire, The Tool Show, and The Irish Fest. Perhaps the best benefit is that at every event the opportunity is presented to develop relationships with some pretty exciting people, people who are excited about their turning, their creativity, their learning, individuals to develop long term relationships with and you just never know when you'll run into them - like Sunday morning at Woodcraft - see above photo.

# MEETING

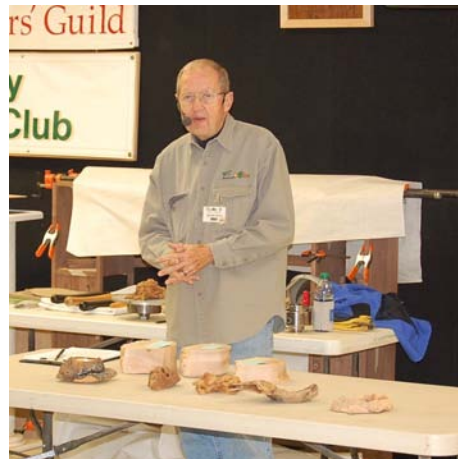


**Mike Thomas**, our president, gets the meeting started at 7:00 sharp with introductions and announcements: He introduced our visitors from Wamego one of whom was Tom Boley who is our professional demonstrator for

He reminded everyone of the February Pro demonstration, that Carl Jacobson is booked for October and that the Tool Show is now going to be in April at the Center by the airport. We also have the Maker Faire coming up shortly. Dues are due. **Ken Moberg** is a new Board member replacing **Dave Bartlett** and he will be taking over the raffle and fundraising. Need a library volunteer to help from time to time - amnesty period till St. Patrick's Day for all overdo materials, **Kevin Neelley** has put up 22 years worth of KCWT newsletters on a the website. Sign into open turnings when you get here. **Bud Schenke** received his Legends Award. Tool Show April 8-10 and more information will be coming as we get closer to the date

# DEMONSTRATION

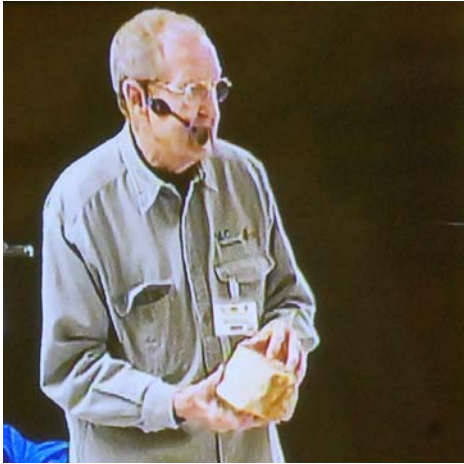
This month's demonstration was provided by Board Member and Vice President, **Rich McCartney**. He showed how to "chuck up" odd shaped pieces of burl so they could be turned.



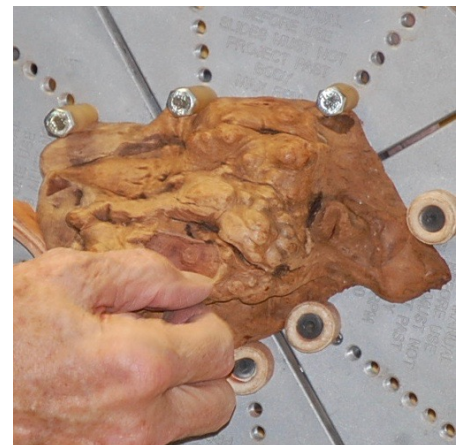
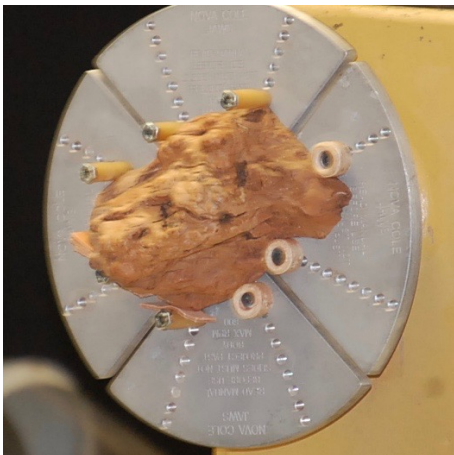


Rich said that he was focusing on burls. There are three main ways to set up a burl for turning: screw center, faceplate, cole jaws, but you can always make your own jig depending on the shape of the wood. The first thing one needs to do is to establish what you want the final turning to look like and that will help to determine the chucking method. Also make sure that the size of your lathe is going to be able to accommodate the size of the piece of work you are wanting to turn. Larger pieces seem to work better on a screw center. Smaller ones can use the cole jaws. He has a couple different kinds of pins for the cole jaws and he has some that he made which are much longer and enable him to secure the wood better.

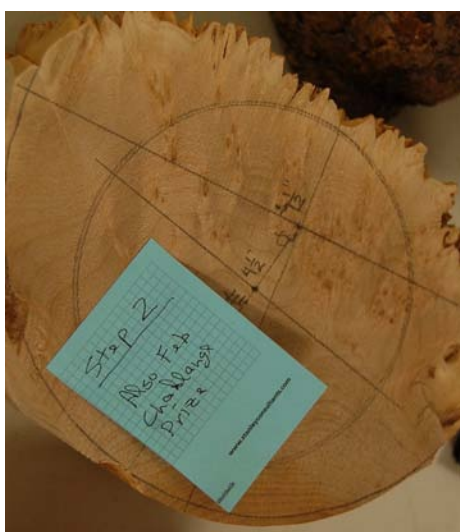
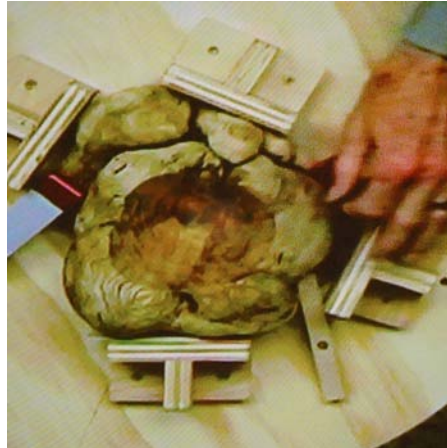
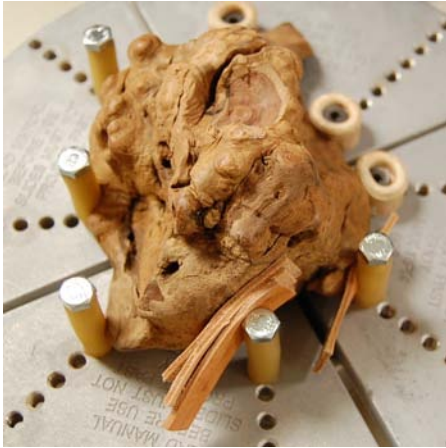
The speed at which you turn is the speed with which is the safest and you are the most comfortable with. A larger piece will generally need a slower speed, especially if it is an odd shape. "I've actually had my Powermatic vibrate and walk across the floor."



Rich responds off to the side then he is turning in case the piece comes loose. It may be that you have to tighten things as you are turning the wood. The one he put on the lathe for the demonstration, he figured he would be turning at around 6-700 RPM. He also demonstrated a piece coming loose from the cole jaws, reattaching it, and then turning the bowl. The situation was such that for safety reasons, the shield was brought out and placed between the audience and the lathe.



The goal, of course, is to attach a very odd shaped piece of material to the lathe so that it can be turned into something of beauty - perhaps even utilitarian.



This piece of hard rock maple burl was donated by Rich as the challenge prize for next month's meeting. So...get that really odd piece of wood you've been saving because you didn't know what to do with it, and experiment with the mounting techniques Rich talked about and see you and what you turned at the next meeting.



# The Challenge

The Challenge this month was to show something you did for the first time in 2015



**Shaun Q. McMahon** brought in the first large bowl he'd turned . He's turned bowls before but they were very small. This one was a bit of a challenge because of it's size. Finished on the outside with wax and on the inside with urethane. **Ken Moberg** brought a light catcher and **Phil Royer** brought a piece in that he chased threads in - never having done that before and he'd never done a finial previously.



A new member and not having turned previously so everything is new to **Larry Sumner**. He used a mahogany burl and made a candle holder and used some turquoise to fill in some voids. **Kris Coyan** wanted to make something a la Rudy Lopez and liked the square thin turning with a bowl. He got the then part done and then decided to go all the way through, then needed to fill the hole and it is supposed to be a bullet with a trail. Then made a pistol looking stand out of plastic. At the December meeting we had an activity of a team turning a bottle stopper. **Sue Bergstrand's** team had some problems so she took the piece home to finish it off. Team three's piece now looks quite a bit different and much improved. She had some practice in drilling out the old dowel and getting the new one in and in using sawdust and glue to fill some voids as well as using dye. She topped it off with a silver star. A perfect example of never giving up.

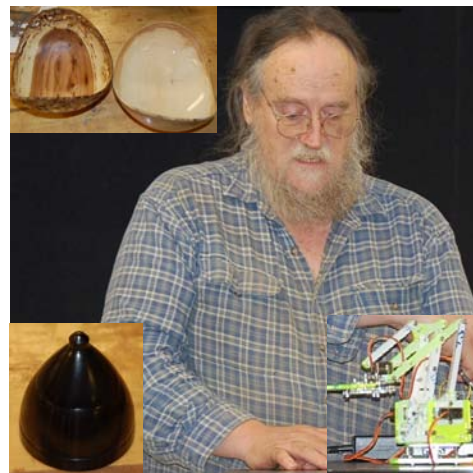


**Ed Jaszczak** made a ——— (you ask him) One needs to be very accurate and careful with the turning. Turn it, cut it, and glue it back together. Just to be a show-off, he added rings that go all around. Two coats of lacquer and then used beall. The journey started last year when he lost an Osage tree in the back and this lead to a lot of experimentation with using color, making thin walled bowls, and graduated to a lot of nuts and bolts. That's what **Rick Bywater** said. Then he tried the captive ring, carved, and steamed tulips. **Jack Karstens** made a tipper. It is a piece of wood that is used (in this case by his daughter) to play a bodhran, which is an Irish drum. He bought some ebony to make this one.



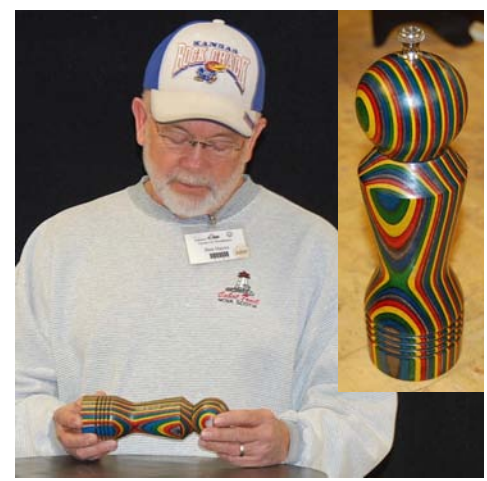
Words of advise for the new year "Don't ever promise your children anything." **Stuart Shanker** found out the hard way by having to make a lot of chess pieces and three chess boards. So far he's made 96 pieces and has more to go. They are weighted with pennies. Being a little excentric (possibly) **Anthony Harris** made an excentric Christmas tree using three axes. It was an experiment. Mike Thomas took Rudy Lopez's class and out of that experience he made a square to round goblet out of honey locust.

# SHOW AND TELL



Besides a couple bowls and a ring presentation box with a center ring that spins - threaded of course, **Anthony Harris** brought in the latest creature from the Epsidon Eridanni star system. There is nothing that this one won't eat and the cats are afraid of it.





Lenexa Parks had an art competition and **Kris Coyan** wanted to participate. He actually got the wood from the city, turned as bowl and drew the park inside of the bowl using photos and tracing paper. **Andrew Mitchell** brought is a couple very large tops. They turn for a very long time as he demonstrated. Use a long rope, wrap carefully, get close to the ground and throw upside down. It's better than the energizer bunny. The colorful **Ben Hayes** brought in a peppermill which he had all sorts of problems with. He used dymond wood which is very porous and he used lacquer-four coats,



Two bowls in one is what **Jim Lambie** made - chips and dip. Used sanding sealer first before putting the finish on. **Mike McReynolds** brought in a segmented Christmas ornament because his wife made him. Thee is 142 pieces in this ornament. It is hollowed to about 3/16 of an inch thick. Finished with a turning finish. Took about a week and a half to do four of them. **Sue Bergstrand** made some rather small birdhouses. Found the parts hanging around the house from some kits that were ordered years ago.



Living in VA at the time, a school had a cardboard challenge and **Tom Boley** just had to turn a cardboard bowl\.

He glued all the pieces with Titebond glue and put about \$60 of CA glue so he could turn it.

An old friend and KC Woodturner member Rodger Lambie passed away this month, 1/12/16, at his home in The Villages, Florida. "Rod" and his son, Jim Lambie, joined the KC Woodturners Club in 1997. He was very active with our club for a number of years until he moved away. Jim says that his dad was always an avid woodturner. Many of the older KCWT members will fondly remember Rod



**Woodturner:** a person who uses a lathe to make square objects round; one who turns bowls, plates, pens, and other utilitarian objects; one who makes shavings for his wife's garden; one who would rather turn it than burn it; one who things sharpening is an art; a person who spends three times as much time looking for the tool just set down than actually using the tool.

## KCWT BOARD

### President

Mike Thomas  
816-835-0900

[pres@kcwoodturners.org](mailto:pres@kcwoodturners.org)

### Vice-President

Rich McCartney  
913-317-6561  
[vp@kcwoodturners.org](mailto:vp@kcwoodturners.org)

### Treasurer

Kevin Neelley  
913-492-6522  
[treas@kcwoodturners.org](mailto:treas@kcwoodturners.org)

### Secretary

Shaun Q. McMahon  
913-908-0245  
[editor@kcwoodturners.org](mailto:editor@kcwoodturners.org)

### AT LARGE

Mike Erickson  
913-829-6534

Anthony Harris  
913-648-2027

Ken Moberg  
816-447-1665

Kris Coyan  
913-579-9152

Rick Bywater  
913-897-0765



**Woodcraft Supply**  
8645 Bluejacket Rd.  
Lenexa, KS 66214  
(913) 599-2800

#### Store Hours

Mon, Tues, Wed, Fri 9 am—7 pm  
Thurs 9 am—9 pm  
Saturday 9 am—6 pm  
Sunday 9 am—5 pm

As a member of KC Woodturner, you receive a 10% discount except for on sale items and power tools. Make sure you present your KC Woodturner Card.

### Craft Supplies

1287 E 1120 South  
Provo, Utah 84606  
1-800-551-8876



Jeff Edemann offers KCWT members 10% off all items except sale items and power tools. Ask Jeff about any discount on power tools.



10% discount on lumber and supplies to all KC Woodturners Chapter members when you present your membership card!

816-892-3398  
800-456-2148  
Fax 816-753-0250  
3001 Southwest Blvd.  
Kansas City, MO 64103-3616