

WOODCHIPS - 2015



OCTOBER



November Challenge:

A segmented turning made from at least two pieces of wood glued together.

**Get your raffle tickets
when you come into
the meeting.**

November Demo:

David Bartlett will show how to make Christmas tree ornaments.

MEETING



1. KCWT President **Mike Thomas** opened the meeting with announcements and reminders of upcoming KCWT events:
2. The **Rudolph "Rudy" Lopez** Woodturning Demonstration starts at 9:00am Saturday 24th at the KCWT Clubhouse. Everybody is welcome. Fee is \$25. The Saturday Open Lathe will be closed this day due to the demo.
3. There are still a couple openings in the **Rudolph "Rudy" Lopez Hands-On Class** at 9:00am Sunday 25th. Contact Kevin Neelley at treas@kcwoodturners.org or 913-424-5691 or more info.
4. If you attend the Saturday Open Lathes, don't forget to make a **donation** (\$2 is great) to help us defray the extra rent we pay to be open the extra days. We went from two Saturday Open Lathes per month to **EVERY** Saturday Open Lathes last year.
5. Some members expressed interest in another **Open Lathe Thursday Evening**. Now, we are open the 4th Thursday evening from 6:00pm to 9:00pm. To do this we need a volunteer who would open and close the shop on that day for the year. Contact Mike Thomas at pres@kcwoodturners.org for more information.
6. The KCWT **Annual Auction** is scheduled for November 7th 10:00am-4:00pm at the KCWT Clubhouse. Doors open at 9:00am. This auction pays **HALF** of the club's annual rent so this is a very important event. Please attend and spend!! There is still time to donate good woodworking and woodturning tools. The Saturday Open Lathe will be closed this day due to the Auction.
7. The **Personal Woodturning Critique** was kicked off by six woodturners that were looking for a useful critical opinion of their work. This event precedes the monthly meeting and is held at 6:15pm in the library by Mike Thomas. There is a write-up on this session later in this newsletter.

8. KCWT club president Mike Thomas announced that, per our club's bylaws, the annual KCWT officer elections will be held at the regular November meeting. As per the bylaws, additional names may be placed in nomination from the floor at the annual election, proxies will not be recognized, and the election shall be by a simple majority vote by the members present on election night. If you are interested in being a Board Member please contact Mike Thomas at pres@kcwoodturners.org as soon as you can. The club officers have recommended the following slate to be voted on:

President: Michael Thomas

Vice President: Richard McCartney

Treasurer: Kevin Neelley

Secretary: Shaun McMahon

At-Large Board Members: Mike Erickson, Anthony Harris, David Bartlett, Kris Cohan, Rick Bywater

Constructive critique session

Six KCWT members brought their recent turnings and gathered in the Library at 6:15 PM on October 12th for a "Constructive Critique" session. Participants were interested to learn what others saw in their work and looked for ideas to improve their next one. An informal discussion followed due to the number of participants and limited time available but everyone walked away with some useful suggestions they plan to incorporate into their next turning.

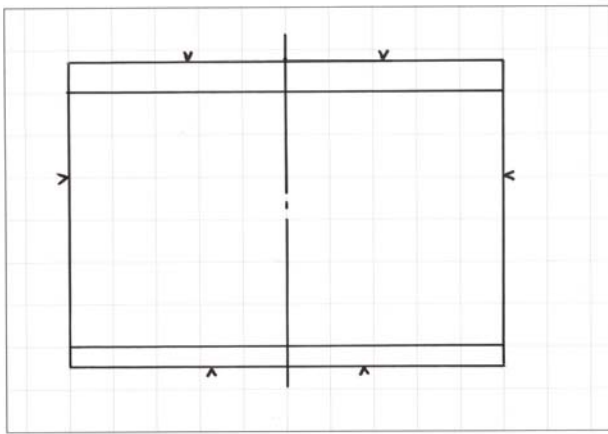
Overall, many participants found the experience worthwhile and appreciated feedback from someone other than family members who generally "just love everything I turn".

If you are looking for some positive feedback to help improve your work, bring a turning and join us in the Library at 6:15 PM before our next monthly meeting. Everyone is welcome.

DEMONSTRATION

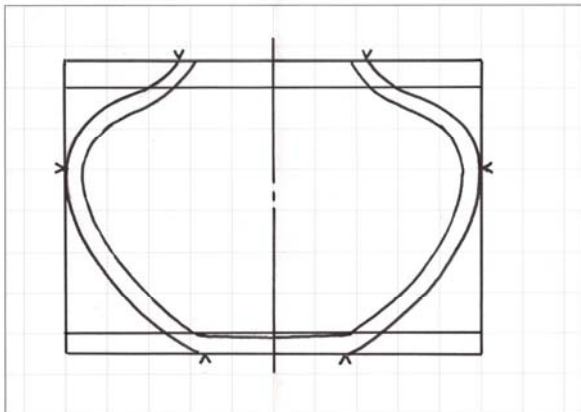
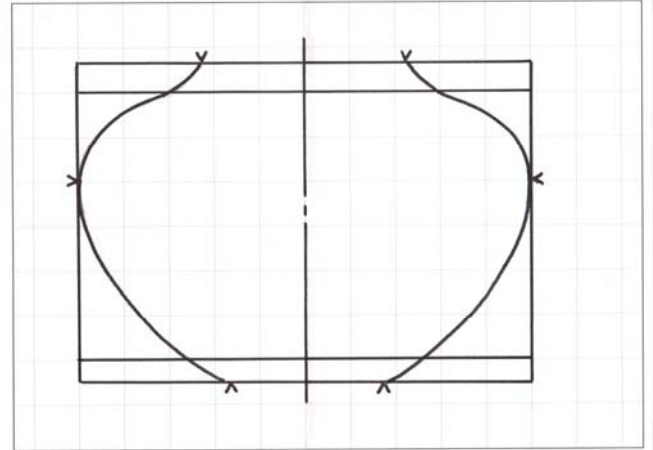


October's demonstration was provided by Kevin Neelley who discussed stacked-ring segmented woodturning design. The upper photos show the stacked-ring bowl, nearly finished at left, and the loose stack of rings that were used to make it. Kevin starts off a new design with a shape in mind, then he adds diameter and height to the shape, finally sketching the design full-size on graph paper and measuring the ring dimensions directly off the graph paper to calculate a Board and Segment Cutting List.



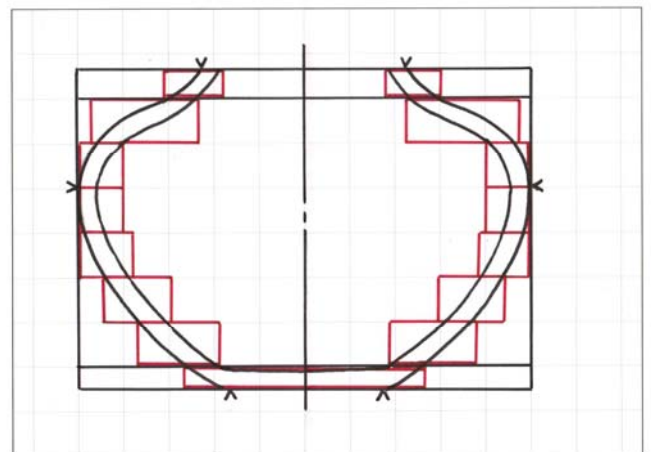
Step 1. Kevin used 1" square graph paper but 1/4" graph paper works fine. Draw a window enclosing the design. The bowl will be composed of six 1" thick segmented rings with 10" maximum diameter, a 1/2" thick disk base, and a 5/8" thick segmented rim. Use carets to show the 3-1/2" base diameter, the 4-1/2" rim diameter, and the location of the widest diameter of the bowl.

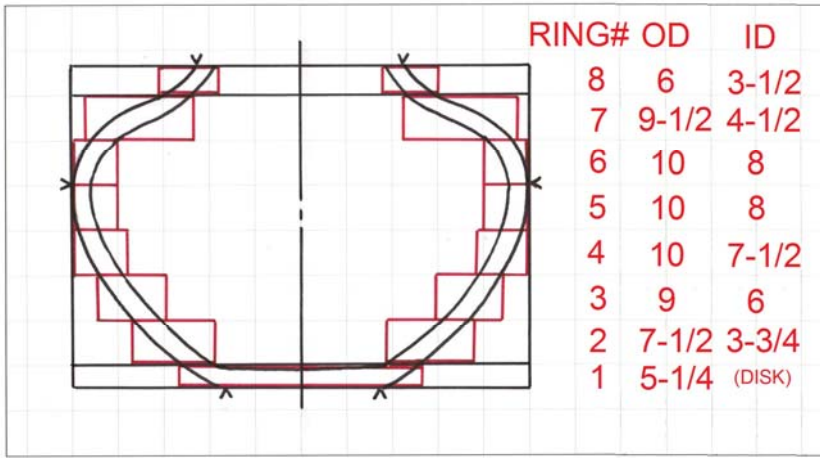
Step 2. Draw in the outside curve of the bowl.



Step 3. Draw the inside curve of the bowl showing the construction wall thickness. Kevin used 1/2" wall thickness. The wall thickness is just used for construction and is not the final wall thickness. Final wall thickness is whatever you want it to be, but it can't be more than construction wall thickness.

Step 4. Draw in the boxes representing the outer and inner diameters of each ring. I used red to make the ring stand out. Note that the outside and inside curves of the bowl are inside the boxes. That's what makes the boxes





Step 5. Label the ring numbers on the sketch. Since the sketch is full-size, measure the Outer Diameter (OD) and Inner Diameter (ID) of each ring. At this point, if you were using a computer program, you would enter the diameter dimensions into the program and it would calculate a cutting list. If you don't have a program, the cutting list can be hand calculated as shown below.

These formulas were used at this demonstration to calculate the Board and Segment Cutting List. Note that some of the formulas are Rule of Thumb and are not exact, but they are close enough. The actual formulas require trigonometry.

FORMULAS Used in this Demonstration

MITER ANGLE	$180 / \#SIDES$
BOARD LENGTH	$CIRCUMFERENCE = \pi * OD$
BOARD WIDTH	$MEASUREMENT + 1/4"$
SEGMENT LENGTH	$CIRCUMFERENCE / \#SIDES = \pi * OD / \#SIDES$
(NOTE: BOARD LENGTH, BOARD WIDTH, SEGMENT LENGTH are Rule of Thumb calculations and are not exact)	

BOARD and SEGMENT CUTTING LIST

RING#	#SIDES	MITER ANGLE	BOARD LENGTH	BOARD WIDTH	SEGMENT LENGTH
8	16	11.25	19	1-1/2	1.78
7	16	11.25	30	2-3/4	1.86
6	16	11.25	32	1-1/4	1.96
5	16	11.25	32	1-1/4	1.96
4	16	11.25	32	1-1/2	1.96
3	16	11.25	29	1-3/4	1.77
2	16	11.25	24	2-1/4	1.47
1	(Disk)	-	-	-	-

Step 6. Calculate the Board and Segment Cutting List.

Step 7. Cut the boards and segments. I suggest cutting the widest board first, about 6" extra length, and cutting all segments from it. This is the 2-3/4" wide Ring#7 board. Look at every cut segment and check for mis-cuts, cracks, and other defects. Use the extra board length for cutting replacement segments. Then cut the second widest board and rip the remainder of the first board to the second board width. This is the 2-1/4" Ring#2 board. Cut the segments and inspect the segments. Continue until all segments are cut.

The Woodturning CHALLENGE



Jerry McMaster



Larry Sumner



Sue Bergstrand



David Bartlett



Kris Cohan



Larry Settle



Mike Erickson

The Woodturning Challenge this month was to use surface decoration techniques as per Jerry McMaster's demo last month.

The Challenge is generally based upon the previous month's demonstration. The purpose of the Challenge is to encourage everyone to push themselves to try and do something that they have never done before, to improve upon something they have already done, or to look at the piece in a completely different way from how they have seen it in the past. Usually, the Challenge is an example of all three.

When you participate in the Challenge, you receive a ticket for a tool drawing. Every challenge entrant gets one ticket. The challenge is certainly about quality (as turners we strive to do our best always) but it is more about participation. Each entrant has an equal chance to win the tool. It makes no difference if you are a beginner, an intermediate turner, or someone that has been turning for a long time. Everyone in **KCWT** is urged to participate.

SHOW AND TELL



Rick Bywater



Kris Cohan



Don Gruis



Mike McReynolds



Tony Giordano



Andrew Mitchell



Mike Erickson



Dan Carlson



Anthony Harris



Larry Sumner



David Bartlett

Please support our suppliers and
they will support you !!



Woodcraft Supply
8645 Bluejacket Rd.
Lenexa, KS 66214
(913) 599-2800

Store Hours
Mon, Tues, Wed, Fri 9 am—7 pm
Thurs 9 am—9 pm
Saturday 9 am—6 pm
Sunday 9 am—5 pm

As a member of KC Woodturner, you receive a 10% discount except for on sale items and power tools. Make sure you present your KC Woodturner Card.

Craft Supplies
1287 E 1120 South
Provo, Utah 84606
1-800-551-8876



Jeff Edemann offers KCWT members 10% off all items except sale items and power tools. Ask Jeff about any discount on power tools.



816-892-3398
800-456-2148
Fax 816-753-0250
3001 Southwest Blvd.
Kansas City, MO 64103-3616

10% discount on lumber and supplies to all KC Woodturners Chapter members when you present your membership card!

KCWT BOARD

President

Mike Thomas
816-835-0900

pres@kcwoodturners.org

Vice-President

Rich McCartney
913-317-6561
vp@kcwoodturners.org

Treasurer

Kevin Neelley
913-492-6522

treas@kcwoodturners.org

Secretary

Shaun Q. McMahon
913-908-0245

editor@kcwoodturners.org

AT LARGE

Mike Erickson
913-829-6534

Anthony Harris
913-648-2027

David Bartlett
816-331-5664

Kris Coyan
913-579-9152

Rick Bywater
913-897-0765