

WOODCHIPS - 2014



April



REMINDER

Get your raffle tickets
when you come into
the meeting

April Challenge

A bowl turned on the
bias.

May Demo

John Veerkamp will be
turning mushrooms

Dale Larson-from tree to bowl, thin turning, and making a sphere. - April 12-13

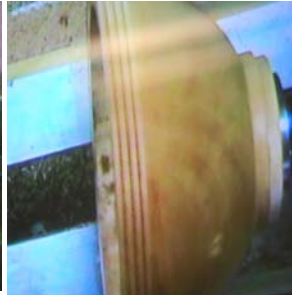
The President of the AAW was hosted by Bob and Sandi Speier. Saturday started at 9:00 AM and he did three demonstrations. He began by talking about trees, cutting, and the "money cut," then turned a bowl, did a thin turning, ending with making a sphere. His fee was donated to the AAW so **KCWT** will have our name on a room at the AAW Symposium in Phoenix this year.



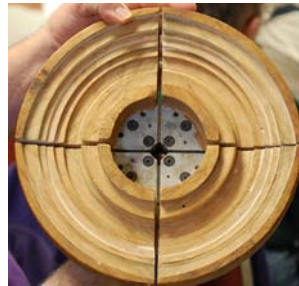
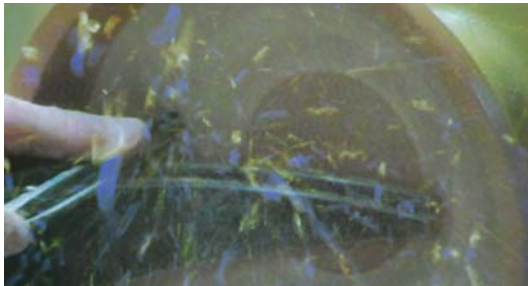
When you do it right; making sure that you have good help who know what they are doing and take direction well, when you understand where the bowl will be sitting in the wood because you understand the characteristics of the tree, you can end up with a beautiful bowl - feather and all.



Being personally concerned about safety, and being a very visible promoter of safety, he used a face shield in turing the bowl.



He used a curved tool rest when finishing the inside of the bowl so he could keep the tool as close to the wood as possible.



When finishing the bottom of the bowl, he uses his custom made chuck so the the bowl is very securely held. Four pieces of 2X6 cut quarter pie shape, and screwed onto jumbo jaws then ridged to fit a variety of bowl sizes assures complete access to the bottom and a secure hold.



Make sure the wood is green and wet. Take your time working in from the lip toward the center. It helps a whole lot if the tool is very sharp and when it starts getting thin, the use of a light can be a great assistance in making sure that the thickness is uniform. When completed, you can shape it as you like or leave it as it is.

The Sunday hands-on activity gave the three who signed up a lot of individual attention. The first thing that happened was the making of cup chucks that would be used in the making of the spheres. The one on one attention helped **Mike Gonzales, Bill Kuhlman, and Shaun Q. McMahon** get a handle on sphere making.



Hosting a guest turner has some advantages. For example, **Sandi Speier** turned this sphere when Dale worked with her in her shop.



Saturday Open Turning 4/5/14

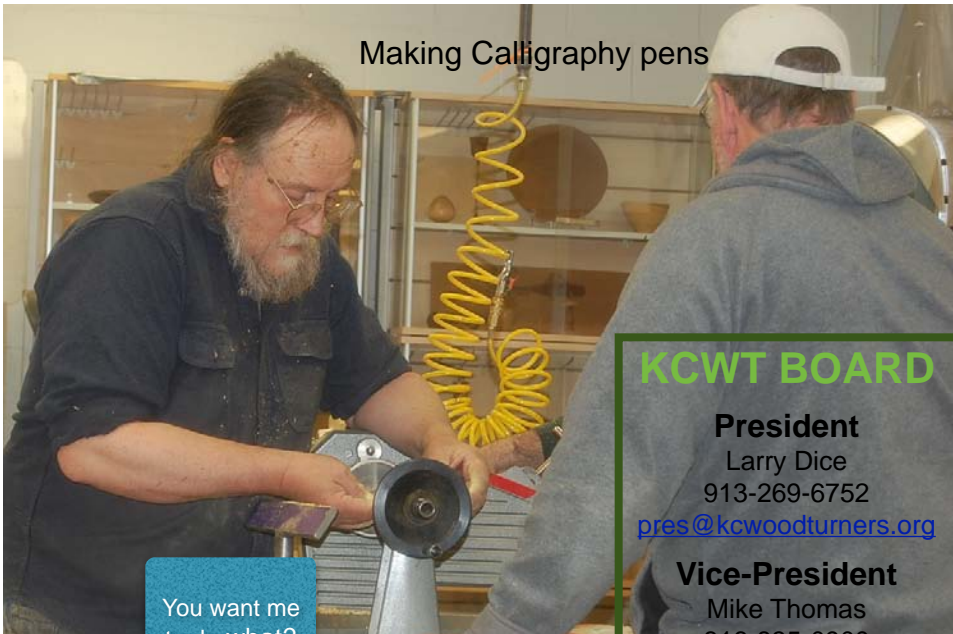


Bowl

Goblet



Drilling holes



Making Calligraphy pens

You want me to do what?



Bandsaw basics



KCWT BOARD

President

Larry Dice
913-269-6752

pres@kcwoodturners.org

Vice-President

Mike Thomas
816-835-0900

vp@kcwoodturners.org

Treasurer

Kevin Neelley
913-492-6522

treas@kcwoodturners.org

Secretary

Shaun Q. McMahon
913-831-4149

editor@kcwoodturners.org

AT LARGE

Mike Erickson
913-829-6534

Anthony Harris
913-648-2027

David Bartlett
816-331-5664

Ex Officio

Norm Peters
913-226-0529



Finishing a bowl

Please support those who support us.



Woodcraft Supply
8645 Bluejacket Rd.
Lenexa, KS 66214
(913) 599-2800

Store Hours

Mon, Tues, Wed, Fri 9 am—7 pm
Thurs 9 am—9 pm
Saturday 9 am—6 pm
Sunday 9 am—5 pm

As a member of KC Woodturner, you receive a 10% discount except for on sale items and power tools. Make sure you present your KC Woodturner Card.

Craft Supplies

1287 E 1120 South
Provo, Utah 84606
1-800-551-8876



Jeff Edemann offers KCWT members 10% off all items except sale items and power tools. Ask Jeff about any discount on power tools.



10% discount on lumber and supplies to all KC Woodturners Chapter members when you present your membership card!

816-892-3398
800-456-2148
Fax 816-753-0250
3001 Southwest Blvd.
Kansas City, MO 64103-3616

AAW Symposium - For those of you not familiar with things that are demonstrated at one of these, here are a couple pages from that latest issue of the AAW Magazine. There seems to be something for everyone. You do need to be a member to attend. One of the perks is that those attending get to see a member of **KCWT** making a presentation - the one with the red circle around it.

ASSOCIATIONNEWS

Joe Ruminski, North Carolina
 ▶ From Tree to Bowls
 ▶ Introduction to Turning (Youth Room)
 ▶ Ball and Cup Toy (Youth Room)



Sunset #2, 2012, Poplar, oak, brass, dye, 28" x 24" x 12"

James Santhorn, California
 ▶ Spindle Turning and Duplication



Untitled, 2013, Walnut, 8 1/2" x 3"
 Photo: Larry Wierby

Jennifer Shirley, Indiana
 ▶ Hammered Copper Lids for Containers



Untitled, 2013, Cherry, copper, 7" x 3"

Lee Sky, Florida
 ▶ Acorn Birdhouse Ornament, Thread-Chased Top, Palm Nut Eggs



Ornament, 2014, Norfolk Island pine, boxwood, Christmas palm nuts, 2 1/2" x 1 1/2"

Alan Trout, Texas
 ▶ CA Finishing: Vessels and Turned Forms



Red Neck, 2013, Olive root burl, red pigmented resin, 4 1/2" x 6 1/2"

ASSOCIATIONNEWS

AAW 28TH INTERNATIONAL SYMPOSIUM IN PHOENIX

SELECTED DEMONSTRATORS

John Beaver, California
 ▶ Techniques for Making Wave Bowls
 ▶ How to Mount, Turn, and Finish Bangles
 ▶ Photographing Your Work



Open Wave, 2012, Cocobolo, 4" x 10"

Patrick and Peggy Bookey, Alaska
 ▶ A New Spin to Turning It Thin
 ▶ Super Bowls Are Full of Holes: Piercing



Untitled, 2013, Birch, blackwood, 5 1/2" x 8 1/4"

Les Casteel, Arkansas
 ▶ Improve Production of Segmented Turnings Using Manufacturing Techniques



Walnut Basket Bowl, 2012, Walnut, maple, brass, 14" x 16"

Andy Chen, Texas
 ▶ Segmented Turning 101: The Basics
 ▶ Segmented Turning 201: Accent Rings



Suspended, 2013, East Indian rosewood, curly maple, walnut veneer, Nicaraguan cocobolo, 5 1/2" x 11 1/2"

Kip Christensen, Utah
 ▶ How to Teach New Turners: Projects and Techniques
 ▶ Turning and Decorating an Ornament (Youth Room)
 ▶ Kitchen Whisks and Mini Screwdrivers (Youth Room)



Tower Box, 2009, Amboyna burl, African blackwood, turquoise, 6" x 3"

Nick Cook, Georgia
 ▶ Rotations for the Youth Program: Garden Dibble, Candleholder, Platter



Untitled, 2004, Silver maple, 16" dia
 Collection of James and Marisa Pruss

Richard Findley, England
 ▶ Stair Spindle With Routed Flutes
 ▶ Spindle Turning Featuring a Hand-Cut Barley Twist
 ▶ Spindle Turning for Furniture Restoration



Desert Moon Rising, 2013, Oak plate, air-brush paint, carved, burned, and textured, 11" dia

Joe Fleming, California
 ▶ The Airbrush Demystified



Desert Moon Rising, 2013, Oak plate, air-brush paint, carved, burned, and textured, 11" dia

Brian Gisi, Colorado
 ▶ Advanced Pen Designing
 ▶ Advanced Pen Construction



Titanium Spyder, 2011, 5 1/2" x 1/4"

Theo Haralampou, Australia
 ▶ Xylobowl Tongue Drum



Ghost Who Walks, 2011, Huon pine, 12" x 3"

Anthony Harris, Kansas
 ▶ Dual-Chambered Tobacco Pipe



Pregnant Guppy, 2012, White heath burl, vulcanite, acrylic, aniline dyes, wax, 2" x 6 1/2" x 3 1/2"

Al Hockenbery, Florida
 ▶ String Puzzle (Youth Room)
 ▶ Ball in a Ball



Nested spheres, 2005, 2007, Uga orange, camphor, pecan, largest sphere 5" dia

Bonnie Klein, Washington
 ▶ Stick Pens (Youth Room)
 ▶ Acrylic Threaded Box
 ▶ Spin-Top Box



Photo: Anil Wadli

David Lindow, Pennsylvania
 ▶ Ornamentally Turned Hexagonal Box
 ▶ Ornamentally Turned Pens
 ▶ Cutting Patterns for Thin Layered Boxes



Pendant, 2012, African blackwood, silver, enamel (by Ron McGuire), 2" dia
 Photo: Eric Spent

Bill Ooms, Arizona
 ▶ Mini Metal Lathe for Woodturning
 ▶ Boxes With Thin Layers
 ▶ Making Pen Parts on a Mini Metal Lathe



Block Eggs, 2012, African blackwood, maple, tamboti (left), African blackwood, maple, bloodwood (right), 4" x 3" dia

woodturner.org

7

6

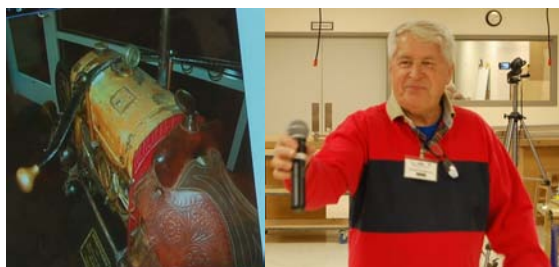
American Woodturner April 2014

MEETING

Larry Dice began the meeting talking about the Dale Larson Demo. Then he announced that we will be having a summer picnic again. We will use the shelter next to the one we had last year. The picnic (pot luck) will be June 14th and we will have the shelter from 8 AM to 10 PM. More information will be forthcoming.

The Columbia, MO turning club wanted someone to come to their meeting on Sunday April 27th and demonstrate top turning. **NOTE - Jerry Darter and Edd Maxwell** went to do the demonstration. The Top Guys come through again.

What's art? **Dick Woodhouse** is still searching for the answer. But the key is he keeps on looking and he brought in an example of something that falls into that category. Not your cup of tea? Well...remember, "Each to his own taste" said the old lady as she kissed the cow. It's obviously not a cow but an artistic impression.



CHALLENGE

The challenge this month was to make a shawl pin based on the demonstration last month by **Mike Erickson**.



Jim Reynolds didn't get it exactly right but created his own design enhancement. **John Hendrickson** made a variety for his wife putting a cap on the pointed end. **John Veerkamp** had some that he had already made. Limited only by imagination. **Ben Hayes** wanted to make a square edged one but went to far and the corners rounded off. **Bert Dunham** made one out of rose wood. **Shaun Q. McMahon** (camera shy) made one with a

SHOW AND TELL



Shaun Q. McMahon brought the spheres and cup chucks which were the result of the Dale Larson Hands-on.



Thinking about the art display for **JOCO Dick Woodhouse** made something that can be hung on a wall.



His wife requested a really nice bowl for a wedding gift. **Rick Bywater** made this one out of box elder. He finished it with polyurethane.



Sycamore is the wood and **Rich McCartney** turned these two between centers. This wood is from New York and tends to be smaller than the sycamore here.

Alan Carter inspired **John Veerkamp** to keep making some of the things he learned during the demo. These are made of walnut and cherry. Some of these will be for the art show.

Start making things for the Art Show for 1060.



A purse hook - walnut inset - and a pen with a light and a stylus were brought in by **Larry Settle**.



Tony Giordano (camera shy) brought in a segmented bowl.



Spending four years in South Africa gave **Dave Agee** some experiences with different woods indigenous to where he lived.



Mike Erickson brought in a bowl he made from a piece of spalted maple that he got from the wood pile in our shop - it was FREE.



All these spheres came from the same size block of wood. They are smaller when you are just learning. **Mike Gonzales** is obviously a fast learner. He took the class from Dale Larson



A bowl turned on a bias is what David Bartlett brought in. He wanted to show what he was going to demonstrate how to turn. NOTE, he is also a marathon runner.

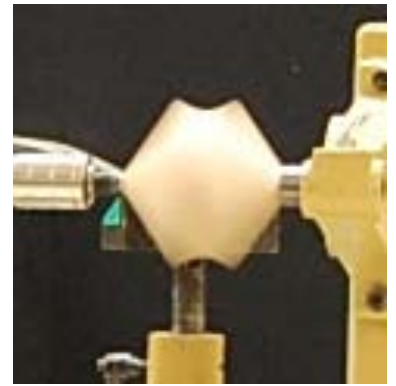
Thank you to all who are participating in The Challenges and in Show and Tell. These are grand ways to develop skills, to pass on your skills to others, and to inspire others to get on their lathes and do some turning. If you have not been a participant lately, give some thought to being one and then do it. We all benefit from the expertise that is brought in through these activities. This helps **KCWT** get better and better.

OK, it's not exactly a sphere as it has a thingy on it. But **Anthony Harris** is always trying new things so he did some design carving on it from the stem to the neck on the bowl.

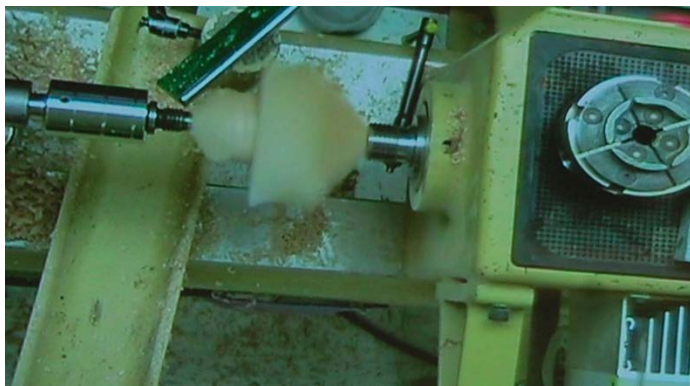


Demonstration

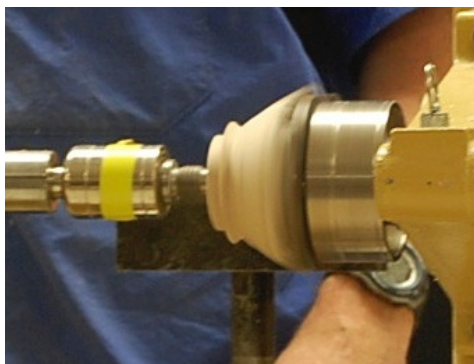
- this month's demo was provided by **David Bartlett** who showed how to turn a bowl on a bias -



First, you start with a cube and the more cube it is the better. Make it a perfect cube and then take two opposite corners and put one in the tail stock and one in the head stock and then take stock of the importance of making sure that you keep anything you have of value - like fingers and hands - out of the way of all the other spinning corners. The first thing to do is to turn a tenon for a chuck. Then turn the outside round. With the chuck on the headstock turn the inside.



Make absolutely sure that you keep all hands and fingers behind the tool rest. Reverse the bowl on the chuck securely and finish the bottom of the bowl. Then, you're biased.



**“Go into the arts. I’m not kidding.
The arts are not a way to make a living.
They are a very human way of making life more bearable.
Practicing an art, no matter how well or badly,
is a way to make your soul grow, for heaven’s sake.
Sing in the shower. Dance to the radio. Tell stories.
Write a poem to a friend, even a lousy poem.
Do it as well as you possibly can.
You will get an enormous reward.
You will have created something.”**

Kurt Vonnegut



You can do all the above **and** you can do
some woodturning.

Another way of looking at art is that it is
an activity that transforms the doer/
maker. I know of no person who has not
been transformed by putting a tool to
wood on a lathe.