

# WOODCHIPS - 2013



September



## Challenge

### REMINDERS

Get your raffle tickets when your come into the meeting

### October Challenge

A winged bowl

### October Demo

Jerry Darter and Edd Maxwell on top turning.

The Challenge for September was to make something thin, pierced, or a combination of the two.



David Burke



Jerry McMaster



Kent Townsend



Kris Coyne



Ed Jaszczak



# SHOW AND TELL



# Think AUCTION



# Demonstration

This month's demonstration was provided by **Jim Flaherty**. His goal was to show the club how to turn a winged box. This means that the challenge for next month is to make a winged box and show up at the meeting with ten fingers and no cuts or bruises.



The first thing that Jim did was to stress the importance of safety. The process of turning a winged bowl means that one is turning more air than wood. Using a rectangular blank means that there are ample opportunities for injuries so make sure that you ALWAYS keep your hands and fingers behind the tool rest. Also use very good lighting which makes it easier to see the shadow. He mounted the blank on a screw chuck and turned the bottom first also making a tenon so that he would be able to reverse the blank for turning the top of the piece.

## KCWT BOARD

### President

Larry Dice  
913-269-6752

[pres@kcwoodturners.org](mailto:pres@kcwoodturners.org)

### Vice-President

Efi Kamara  
913-451-4511  
[vp@kcwoodturners.org](mailto:vp@kcwoodturners.org)

### Treasurer

Kevin Neelley  
913-492-6522  
[treas@kcwoodturners.org](mailto:treas@kcwoodturners.org)

### Secretary

Shaun Q. McMahon  
913-831-4149  
[editor@kcwoodturners.org](mailto:editor@kcwoodturners.org)

### AT LARGE

Mike Erickson  
913-829-6534

Anthony Harris  
913-648-2027

David Bartlett  
816-331-5664

### Ex Officio

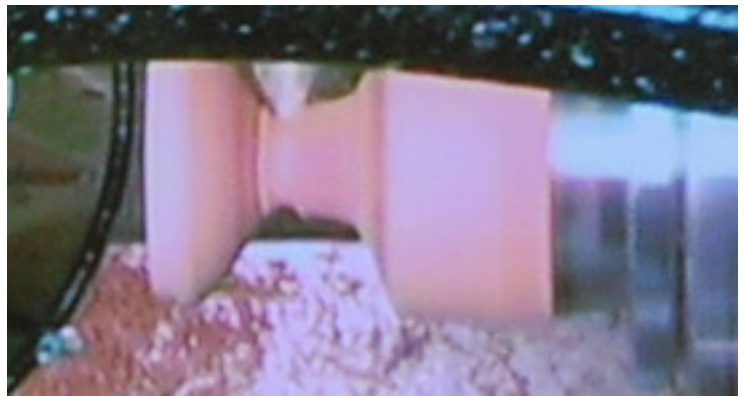
Norm Peters  
913-226-0529



He used hard maple 21/2 inches wide and 8 inches long.



He uses a power sander to smooth out his pieces. He sands one way then reverses the lathe and sands the other way.



After the bowl is turned, the lid is turned and fitted into the bowl. He doesn't like to use a really tight fit. People with arthritis need to be able to get the lid off.



After the demo, **Don Grimes**, **Jim Reynolds** and **Don Speier** had a few questions.





How many woodturners does it take to hang a sign?



Thank you to an incredible bunch of volunteers: **Bill Kuhlman, Larry Dice, Kevin Nelly, Mark Waugh, Mike Gonzales, John Veerkamp, Bill Deans, Efi Kamara, The Gunnel Family, Ed Jaszczak, and Norm Peters.** Another thank you to everyone who made things to sell at the Irish Fest, you helped a great deal.

# Auction

## November 9th

We **NEED** your help. We need items to sell. We have some but more is better. **Kevin Nelly** and **Bud Schenke** have been working hard to catalogue the donations and are looking forward to cataloging even more. More means more money and we sure can use the money as this is the largest money raising activity for the year.



The other way you can help is by donating items you have created. The Art Sale shelves are significantly empty at this point. The art aspect of the auction brings in an essential amount of money and we need your creations. No matter the size, no matter the shape, no matter the color - what you have made **DOES** matter to KCWT. Please bring them to the next meeting on October 14th as this will be the last meeting before the auction. If you can't make the meeting, you can bring your donations to open turnings on September 26th and 28th as well as October 12, 19, 24, and 26.

Invite your neighbors, friends, family members, others you know who are involved in any way with woodworking and/or woodturning - those involved in collecting tools - those curious about tools and using them - and especially, those individuals you know with \$\$\$.

**Just focus on the fun we'll all have.**



KCWT's **Top Guys** did it again. They were at the Deanna Rose Farmstead in Olathe on 9/14/13 helping to raise money. A beautiful sunny day brought out lots of people and lots of tops were turned. Even special orders were taken.



A very generous group of guys helping a very generous organization, founding members **Edd Maxwell, Jerry Darter, David Burke, Vergil Grimes**, and this time **Mike Erickson** was added to the group. 7

A place you might be interested in or you might know someone who might be.



Hammerspace is a curious dimension where tools and devices of any size can be placed and then brought forth at the exact moment they are needed.

It is a 7000 square foot facility which is home to Kansas City's community of makers, crafters, and inventors.

It's like a hobby store with a twist or a gym for folks who build and create. It's where you go to exercise your creativity. Rip a board, sandblast a rusty tool, etch a circuit board, 3D print a missing piece, build a robot lawnmower, CNC something, or get a pen laser etched.

It is an interesting place - thank you **Efi Kamara** for finding it - and it is located at

440 E 63rd Street  
Kansas City, MO 64110  
913-686-6562  
[www.hammerspacehobby.com](http://www.hammerspacehobby.com)

## Please support those who support us



**Woodcraft Supply**  
8645 Bluepacket Rd.  
Lenexa, KS 66214  
(913) 599-2800

**Store Hours**  
Mon, Tues, Wed, Fri 9 am - 7 pm  
Thurs 9 am - 9 pm  
Saturday 9 am - 6 pm  
Sunday 9 am - 5 pm

As a member of KC Woodturners, you receive a 10% discount except for on sale items and power tools. Make sure you present your KC Woodturner Card.

**Craft Supplies**  
1287 F 1120 South  
Provo, Utah 84606  
1-800-551-8876



10% discount on all KDW members 10% off all items except sale items and power tools. Ask Jeff about any discount on power tools.



816-867-3398  
800-456-2108  
Fax: 816-788-0250  
3001 Southwest Blvd.  
Kansas City, MO 64108-3616

10% discount on lumber and supplies to all KC Woodturners Chapter members when you present your membership card!