

# WOODCHIPS-2013

March

[www.KCWoodTurners.org](http://www.KCWoodTurners.org)

## MEETING



Larry Dice got the meeting started by reminding us of the "Shop Tour" (page 7) and the Maker Faire and Irish Fest (page 8). There was also a thank you card for the Ryan and Madonna Richardson who provided the refreshments for the meetings. We are sending them the card with a couple tools. Anthony had the tools laser engraved and we are sending them to their new home in Colorado.



The third Saturday of the month is now an open shop day and we are adding the attraction of including a tool swap/sell. Bring what you are no longer using and see if you can come away with something that you just can't do without.

### REMINDERS

Get your raffle tickets when you come into the meeting.

**April Demo**  
Peppermills by Ed Bergstedt

**Challenge**  
Anything chucked or face plated in an interesting manner

We had the North KC High School students in for a pen turning (page 7). Dixie Biggs is on the demonstration schedule for late in 2014—we are really trying to plan ahead. Any ideas for this year? Let us know. We still have KCWT hats for sale—a bargain at \$10.00. June 15th is the summer picnic held at shelter house #6 Shawnee Mission Park. More information will be forthcoming. Egg tossing and water balloons need special permits but you can bring your yard darts.



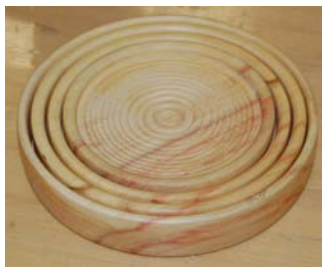
**Dick Woodhouse** related that the STEMS Art Faire is set for June 22nd. It is a bonafide art show and **KCWT** belongs in it. The pre-fair

show is set for June 19th at an upscale Mexican restaurant called Freda's.



### Challenge

The Challenge this month was to make a plate or coasters using a glue block or double stick tape.



Why make regular coasters when you can make them nest.

**Don Gruis** likes pushing the envelope, just for fun.



### INSIDE THIS ISSUE

Challenge 2 Show and Tell 3 Demonstration 4-6 Museum 7 Shop Tour 8 Announcements 9 Tippy Top Perfection 9-10

For Sale 12 AAW news 13





If you save your scrap wood you can do something with it. **Jay Skelton** founds lots of small pieces of wood in his shop and made a few small things with it all.



**Jay Hansen** found some inlay designs at Woodcraft, spent a couple hours putting the pieces together and ended up with an incredible plate.

When you make a plate and your grandchildren use it to turn tops on, **David Burks** decided to make another one so he'd have at least one without top marks on it. That is, unless they start using this one too. It looks so desirable, so...



So he finished the demonstration piece from last month and **David Bartlett** brought it for the Challenge. He also brought a piece of pecan he made into a natural edge plate.

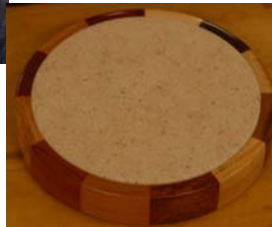


A piece of Walnut with different finishes on top and bottom. Eight coasts



Of shellac on top and wipe on polly on the bottom which **Rick Bywater** said was much easier to do.

He may be just taunting us with Koa wood because he and Debbie are moving to Hawaii but **Parker Nicholson** sure does make some special things with his turnings. These bowls tend to be a little unsteady so he put legs on this one.



This coaster has sixteen segments and each segment is a different wood and the wood is from four continents. This Makes **Tony Giordano** a world class turner. It has cork on the bottom and a solid top and it is finished with lacquer.



A plate within a plate. **Stuart Shanker** first turned the large one, textured, darkened then set the second on inside. "Don't like one, eat out of the other."



Not large but there are three; one square and two round with the top one with an edge designed through the use of ukibori. **Shaun Q. McMahon** tried the technique after **Jerry Darter** talked about it. Walnut, all three.



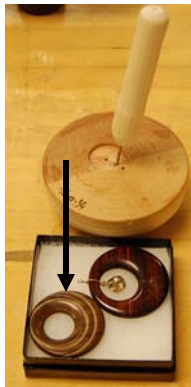


**Chip Siskey** made this at the tool show and brought it in so we all could see it. He didn't say more.



Some lumber with a Blood Wood knob and **Jim Reynolds** made a top for an antique cookie jar. His wife wouldn't let him bring in the jar though. **ALSO WON THE CHALLENGE**

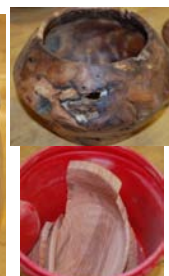
## Show and Tell



The larger pendant, Cocobolo with a gold tooth in the center. The smaller made using the chuck and a combination of two techniques staked from David Bartlett and Anthony Harris. **Shaun Q. McMahon** will borrow from any-



Chip Siskey had some stablized and dyed pen blanks at the last meeting and **Larry Dice** bought one and at Open Turning on Saturday turned a pen. Buffed with micro-mesh



He received a piece of ash as a gift so **Dick Woodhouse** had to make something out of it. Didn't say what the finial was made of.

Two pieces made for the Members Exhibition at the St. Joe Museum. **Chip Siskey** made the banksias pod first then created "The Other Side of the Moon" - smooth on one side with this side of the burl the "other"

At Open Turning things happen like making eggs and **Mike Erickson** turned his first ever egg—perhaps a little pointy—it is sitting in a piece of hollowed out Holly. The stuff in the red container is Locust which didn't quite make it to the finishing stage. Above that is a piece made from an Elm burl with one coat of tongue oil. He wants to make it shinier but not sure how to do it.



A piece of green Cottonwood and **Rick Bywater** began turning it and it started warping before he was even done. Drying it warped more and he had to vacuum chuck it to complete the turning. He put milk paint on the edge.

Ukibori is a Japanese technique involving the dimpling of wood, turning down to the bottom of the dimples, then steaming so the dimples pop out.

**Jerry Darter** is the clubs expert in the technique being able to put it on platters and tops as well—who'd a thunk it.



# New Members



**Brandon Davis**



**Jim Gunkel (and large family)**

Please help them to feel welcome-like we do , get involved with Open Turning, and in sharing their skills with the rest of the club. Glad to have you with us.

## Demonstration

The demonstration was presented by **Chip Siskey**.

He showed a number of chucking methods in "Thinking Outside the Chuck."

Chip started out making pens and small items on a ShopSmith he inherited from an uncle in the late 90's. But it wasn't he took a couple classes and received an invitation to the Kansas City Woodturners, that he became obsessed, er, that is, intrigued and somewhat consumed.

As his involvement in woodturning continued he met Dan Moreno and co-founded the 147<sup>th</sup> chapter of the AAW, the Northland Woodturners in 2000. Chip served as vice president for 2000 through 2002, as president in 2003 and 2005, as Treasurer in 2010 to present, and as an advisor in the years in between.

He was a resident woodturning instructor at Turn About Wood for three years until his time was somewhat limited by the birth of twin daughters. He continues to teach private lessons, enjoys demonstrating for local woodturning and woodworking groups, and civic organization, and displays his work occasionally at Art Shows. When time allows he frequently attends seminars and classes presented by other professional turners. There is always one more perspective or technique to absorb, followed by the spark of an idea to take that technique in his own direction.

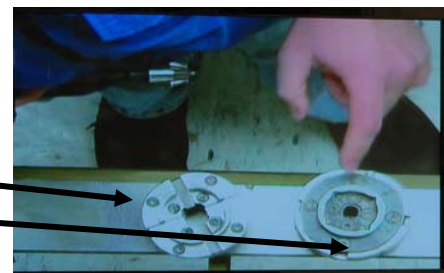
He currently turns on a OneWay 2436 and has found woodturning to be a way he can convey true artistic expression when for years he didn't realize he had any artistic ability at all.



The purpose of the demo was to present ideas about different things we can do with chucks.

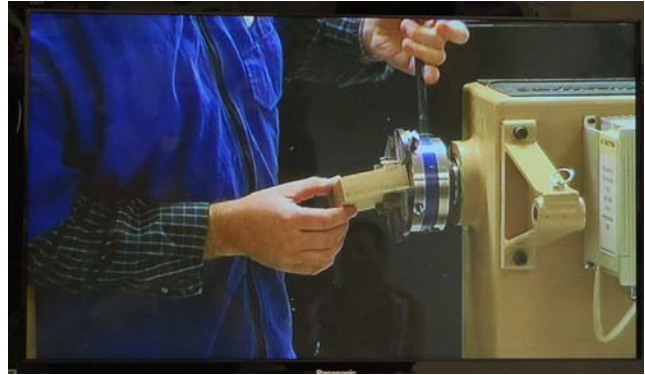
Nova chuck

One Way Talon



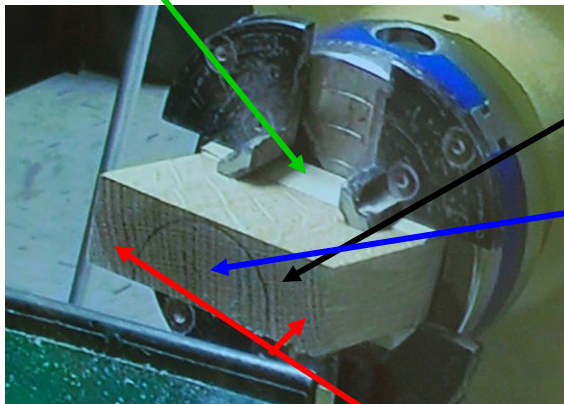


He said that he prefers the One Way but realizes that any group of turners will produce as many ideas about what is best or better. The Nova will make an almost perfect circle to grab something but only when fairly closed. When opened it grips on 8 points rather than the entire surface of the jaws. The One Way has a set of jaws that maintain more surface contact regardless of the size of the tenon. He also recommends that in using a waste block, the grain of the wood run perpendicular to the surface of the chuck. Less risk of the wood shearing off at the tenon.



The project he chose for the demo was making a clock stand. He started with the Dick Sing model and wanted to do something different. He spent a lot of time thinking about a jig that would do what he wanted to do when it dawned on him that there was a much easier way.

He uses spacers attached to the block with double sided tape to help secure the block in the chuck.



The block is secured and the face is cut, on the band saw, at 10 degrees. Make sure that the blank is centered.

Mark a spot in the center to set the tool rest and he used a spindle gouge for the turning.



Pay particular attention to these corners. These provide the stability for the piece. So mark the corners to the front side so you don't lose track of them. Mark the center line as well.



Then mark the outside circumference of the face.

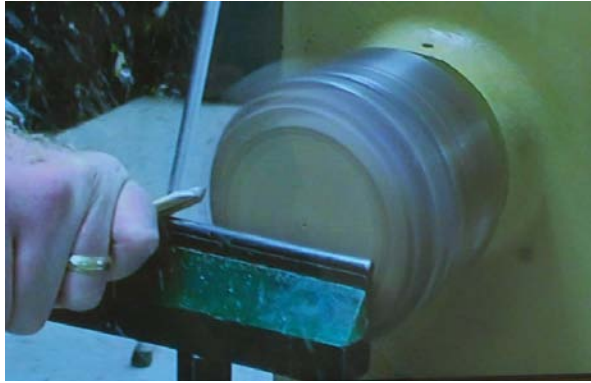


Go from #1 jaws to #3 jaws, remove one of the jaws and mount the blank in the jaws adding pressure with the tail stock.

WHY?



Because it is going to be an off center turning. Removing one of the jaws off sets the blank but enables the chuck to still hold it securely. If you are using a One Way, the jaw you remove is anyone except the #4 jaw. The blank will be centered and supported by two jaws. Tighten from both holes. The outside line tells how deep the cut can be made.



Then make it round and the face work can really begin. The first thing to do is drill a hole for the placement of the clock. He used a forstner bit. Make sure you use one that is the size of the clock that you will be using. After the hole is drilled it is all about the details. He likes to recess the clock a bit.



Following the addition of all the googahs (no idea of that is spelled correctly) shape the face how you want it to be. Again, he continued to use the spindle gouge. There are a number of choices for chucks that can be used for the next part—he ended up using an expanding- chuck that a member had won that evening in the raffle. Reverse chuck the piece on the lathe and complete turning it round and finish off the back by making it flat or concave it a bit.



If you follow all the procedures you end up with something that looks like this







### Welcome to the JD Longhorn Works Museum of Fine Wood Turned Art

This incredible location and display was created by **Jerry Darter** recently. The venue is very colorful. There is a charge for admission to prevent huge crowds from developing in the neighborhood. Valet parking is in the works (small charge but tips are expected) He is looking for guest artists to display. Please do not all call him at the same time as it could clog his phone lines.

There is also a small fee attached to displaying an objet d'art to, again, stem the excitement and rush to display. Monies collected will be used to support local (in-the-house) art production of a wood turned nature. There are a few criteria for display—nothing brought in can be better than what is already on display, it must be turned art, nothing can be larger than what is already presented, and it cannot be set up in such a manner as to diminish the brilliance of the permanent display.

If you prefer, you can email him - JDarter@showmethemoney.art

**Ben Hayes** sent in this link as a beneficial cautionary tale. It is an excellent reminder about safety at the lathe. You can copy and paste this link into your browser. It is worth the look.

<http://www.youtube.com/watch?v=FlhWF4M9CO4>

There is also an excellent article on lathe safety in this month's AAW publication.

### KCWT BOARD

#### President:

Larry Dice  
913-269-6752

[pres@kcwoodturners.org](mailto:pres@kcwoodturners.org)

#### Vice-President:

Efi Kamara  
913-451-4511

[vp@kcwoodturners.org](mailto:vp@kcwoodturners.org)

#### Treasurer:

Kevin Neelley  
913-492-6522

[treas@kcwoodturners.org](mailto:treas@kcwoodturners.org)

#### Secretary:

Shaun Q. McMahon  
913-831-4149

[editor@kcwoodturners.org](mailto:editor@kcwoodturners.org)

#### At Large

Mike Erickson  
913-829-6534

#### At Large

Anthony Harris  
913-648-2027

#### At Large

David Bartlett  
816-331-5664

#### Ex Officio

Norm Peters  
913-226-0529



What happens when we get **Norm Peters, Bill Kuhlman, Larry Dice, Jim Reynolds, Shaun Q. McMahon, and Don Grimes** to get to the shop at 8:00 AM on a Friday morning 3/8/13? We get 15 Students from North Kansas City High School and their teachers, Dennis P. O'Connell and Louis B Breinin to turn pens. They were brought by bus and arrived about 9:30 and we were done by 11:40 or so and all who came went home with some very fine turned pens.

We had all the materials we needed because in the past couple months we have acquired a number of pen mandrels, mandrel savers, and a good number of carbide tipped tools thanks to **Don Grimes and Kevin Neelley**.



## Shop Tour



Have you ever wanted to see how other turners have their shop set up? Have you wanted to see what equipment other turners have? Have you ever wanted to see how others keep their shops clean? Want to see how neatly they store their wood, where they plan out their projects, the voluminous caverns where their shops are located, the opportunity to talk turning in a new location? Well...now you have the opportunity. These members will have their shops open for visiting on March 20th. The hours for the open shop tour are from 9:00 AM to 2:00 PM. See you on the rounds.

**Mike Erickson** 13000 Sycamore Olathe, Kansas  
**Anthony Harris** 8825 w. 80th Overland Park, Kansas  
**Kevin Neelley** 14738 w. 80th St. Lenexa, Kansas  
**Don Gruis** 6703 E 99th St. Kansas City, Missouri





June 28-30

These two events will be upon us before we know it. Both events require volunteers and need objects de art and practicality for us to show and sell. Large and expensive items are desirable but they really serve to draw spectators to our booth. Then they start exploring the other items that they are more likely to buy.

The first year for these events we did pretty well in the sales arena. What we need are items that we can sell from \$2.00 to \$100.00. For the **Maker Faire** only club members will be turning and lots of those turnings will be done by The Top Guys. For the **Irish Fest**, we also offer the opportunity for



## TWO HUGE EVENTS AND WE NEED YOU!



attendees to turn a pen, a bottle stopper, or other item with the help of a member.

So..please start your planning, planning to volunteer and planning what you are going to allow the club to sell at the events. For those items sold, 20% goes to the club and 80% goes to the member.

These events present **KCWoodturners** to the community, give us an opportunity to gain new members and also raise some money for the organization.

Please don't just consider how to help, make a decision to volunteer and make some items for us to sell and be there to support **KCWT**.

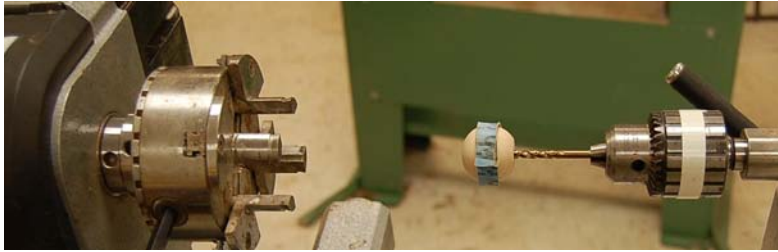


# The “almost perfect” Tippy Top.

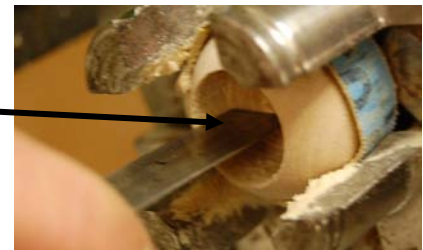
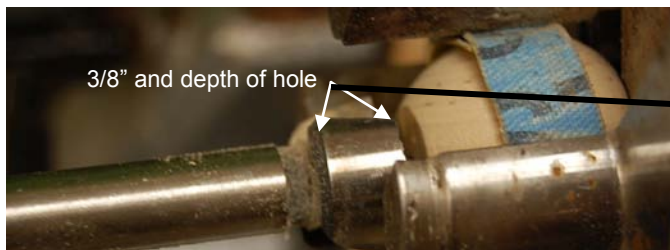
To hear tell it, tippy tops just don't make any sense. Rumor has it that somebody did a PhD thesis on why it does what it does and to hear the Top Guys talk about it, there is a lot of math involved. Actually, Tippy Top inversion is the result of a dissipation induced instability. Really? But, **Edd Maxwell** isn't concerned with the math. The tippy top is sort of the bumble bee of the top world. What's important is just having fun making ones that work. To that end, he has devised a process that produces ones that work. At Open Shop on 2/23/13 he generously shared this process.

Hope you get a little taste of what you're missing by not coming to Open shop—it is grand fun.

List of items needed: Wood ball 1" 1/4" diameter with hole drilled in it (can be obtained at Hobby Lobby), 1/4 " dowel cut to 2" and tapered a bit at the insertion end and a 1/4" drill bit, sand paper to hold ball in chuck, colored pens (broad tip Sharpies work very well), CA glue and accelerator, 3/4" forstner bit.



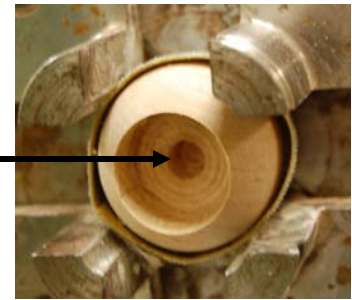
Put the bit in a Jacobs chuck,, which is in the tail stock, mount the ball on the bit and surround it with a piece of cloth backed sand paper which will hold the ball in the chuck and help to prevent serious marking of the ball when it is in the chuck. Using a little CA you can attach the ends of the tape together and end up with a reusable part of the process. Use the bit to center the ball in the chuck.



After centering the ball in the chuck, use the forstner bit to drill a hole in the ball 3/8" deep



Use the 1/4" bit and drill a hole about 3/8" deep into the center of the ball.



Then take the 2" X 3/8" dowel and hold it in the Jacobs chuck. Cover the lathe bed with some cardboard or plastic or towel.

Put some CA glue on the insertion end of the dowel and put it into the ball. Spray with some accelerator.





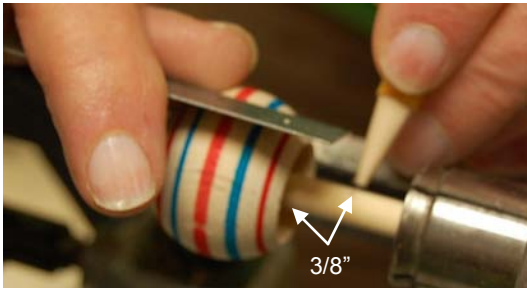


Now release the ball from the chuck in the head stock.. Replace the 4 jaw chuck with a dowel chuck and put the dowel in the chuck.

With the top in this position I, sand the ball smooth getting rid of all the chuck marks.



When the sanding is complete, you can now decorate the ball with the sharpies. The only limitation here is your own imagination. Sharpies don't go on very well over another finish. Here is a time you can experiment with whatever you have.



Mark the length of the spindle at 3/8 "



part off tapering the end a bit



flatten the end



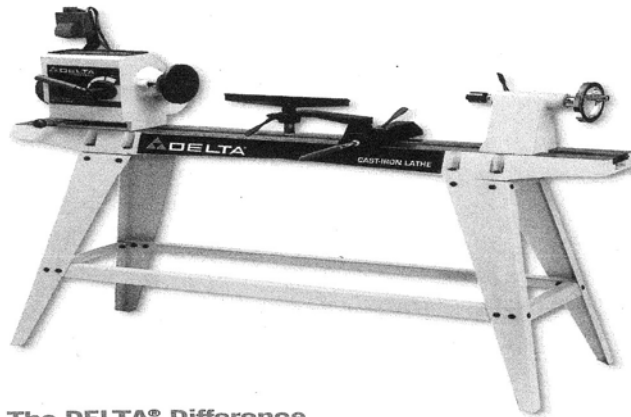
SPIN—SPIN—SPIN—SPIN



Thank you **Edd Maxwell**



## 14" CAST-IRON LATHE Model 46-715



### SPECIFICATIONS

#### MOTOR:

- 3/4 HP, 120V, 1 Phase, 60 Hz, 1725 RPM

#### SPINDLE SPEEDS:

- 600 - 2200 RPM

#### CAPACITIES:

- Swing Over Bed: 14" (356 mm)
- Swing Over Tool-Rest Base: 10-1/8" (257 mm)
- Distance Between Centers: 40" (1016 mm)
- Drive Spindle: 1" - 8 RH thread
- Drive Spindle Through Hole: 7/16" (11 mm)
- Head and Tailstock Taper: #2 Morse
- Tailstock through Hole: 3/8" (9.5 mm)
- Tailstock Ram Travel: 3" (76 mm)
- Head Index Lock: 24 Divisions

#### OVERALL DIMENSIONS:

- Length: 68" (1727 mm)
- Width: 20" (508 mm)
- Height: 54" (1372 mm)

#### WEIGHT:

- 300 lbs (136 kg)



### The DELTA® Difference

- Powerful 3/4 HP, 60 Hz, 9.8 amp, easy 10-position speed change.
- Turn head stock 45°, 90°, and 180° for bowl turning or general outboard turning.
- Easy access on/off switch.
- 6" face plate, spur center and ball-bearing live center included.
- 12" cast-iron offset tool rest.
- Tailstock ram travel 3" through 3/4 thread.
- Steel stand included.
- 24-position index scale on pulley for ornamental work.

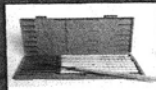
#### PACKAGE CONTAINS:

DELTA® Model 46-715 14" Cast-Iron Lathe includes a 3/4 HP, 60 Hz, 9.8 amp motor; 12" cast-iron offset tool rest, 6" face plate, spur center and 1" - 8 spindle and steel stand.

Wood Lathes

### Accessories

See pages 145-146 for all Lathe Accessories



46-730 - Tools



46-490 - Ball-bearing Center



50-361 - Mobile Base



Easy Shut-off Switch



Swivelled Head Stock BB



Powerful, 3/4 HP Motor

### Features

It is used, and at low speed is has a noise in the belt area. The belts may need to be changed and or tightened, but the seller only wants \$300 for it w/rolling stand is sits on. Those who are interested, please contact Charlie at Woodcraft.



# AAW Regional News

## **The Minnesota Woodturners Association invites you to join us at our event**

Alan Leland, is scheduled to demonstrate to our club April 12 - 14, 2013. Alan is nationally known and is an instructor at John C. Campbell Folk School. He has also been a featured demonstrator at several national and local symposiums including Florida, Southern States, Utah.

Saturday, April 13, 2013 all day demo

This demo will feature "The 3 Legged Stool Demo" for the club followed by the "Delicate Finial Demo."

Location: University of Minnesota

E117 Regis Center for Art

405 21st Avenue South

Minneapolis, MN 55455

Time: 9:00 AM to 3:30 PM

Your cost for this all-day demo is \$30.00. Lunch is on your own.

This date has been worked around the University of Minnesota activities ... No conflict on parking. No reservations are needed for the Saturday session ... just show up.

Friday and Sunday, April 12 and 14, 2013, Small group sessions

Location: Woodcraft

9125 Lyndale Ave. South

Bloomington, MN 55420

Time: 9:00 AM to 4:00 PM

Fee: \$75.00

The Friday session will feature an "Ornament with Globe and Delicate Icicle." The Sunday small session is titled Exploring the Gouge. The small group sessions will be limited to 8 attendees. To sign up for either small group session, please email Mike Hunter, [MLH55410@aol.com](mailto:MLH55410@aol.com).

**Central Oklahoma Woodturners Association** is happy to announce that JoHannes Michelsen will be demonstrating at our monthly meeting on Tuesday April 9th, 2013 followed by two days of hands on classes/workshops being held at our president's shop in Blanchard, OK on April 10th and 11th.

[Please visit our website](#) for more information and to register for this event.

Future events include Jimmy Clewes in October and Alan Lacer in November. Dates and registration times will be announced as these events get closer. So please check back