

# WOODCHIPS



OCTOBER



[www.KCWoodTurners.org](http://www.KCWoodTurners.org)



## Reminders

**Get your raffle tickets when you come into the meeting.**

**KCWT Auction is almost here. November 10th**

# Hey, It's Auction Time!

On November 10th we are having our most important fundraising event of the year. Yes, it is also on the day of one of our Open Turnings so there will be a lot of activity around the place.

**WE WANT**



**YOU!**

To help with the Auction: tell your friends, who have anything to do with wood, about the Auction: tell your neighbors, church members, grandkids, the cop on the corner (gee, do they even do that any more?) your kid's school principal, your scout group, the people at the community center, mothers day out group, the Tupperware lady, EVERYBODY YOU KNOW, about the Auction and then bring um.



## INSIDE THIS ISSUE

Meeting	3
Show and Tell	3
Challenge	4-5
Demo	6-8
The shop	9
A hand out	10
Our Intern	11
AAW news	12

There will be **things to do** (turning in the shop and helping with the Auction), **things to buy** (all the stuff we have gathered and you will find something of interest), and **things to eat** (all sorts of comfort food), and a **party** (all your friends will be here).

# Hey, It's Auction Time!

Here is why we need your help for the



## AUCTION



November 10

Our expenses for the year come to about \$13,000

Rent - \$800/month = \$9600.00 is the largest chunk

But there are other expenses that pop up as well.

Our dues—100 X \$60.00 = \$6,000.00

The short fall is \$7000.00

Some of our equipment is in need of repair and some we actually need to start think about replacing. We need some tools and other items.

Historically our treasury does not increase and we need to start having that happen. In order to be successful at that



# Meeting

The meeting was called to order at 7:00 and there were no visitors but there was a new member. He joined at the meeting.



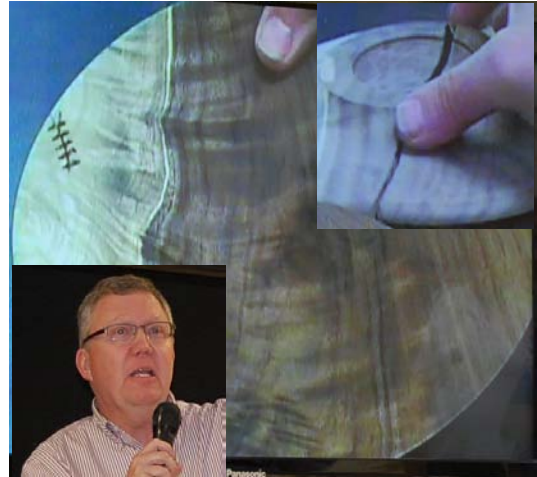
With his payment of dues, Paul Kaster of Leawood, KS lowered that average age of the membership considerably and increased the personality by as much. He is a wood worker who has seen the light and is following it. Paul already knows the most important rule in woodturning—"Use sharp tools." We look forward to seeing him at meetings, open turnings, and following and participating in his development as a woodturner. Welcome Paul.

**REMEMBER—the AUCTION** is on November 10th. We need people to help with moving things and, in general, also need more items for the auction. Check your unused items and consider donating to the

## Show and Tell



**Kevin Neelley**—segmented vase—made 3 and left the inside natural. Used tints from Woodcraft, sanding sealer, lightly sanded and 5 coats of spray lacquer.



**Rick Bywater**—Playing with "stitching." one piece went OK but the second piece blew apart but hit gives more opportunity to stitch.

Show and Tell is a time for members to bring in what they are working on, have completed, things they want help/ideas for, total mistakes that they learned from, and challenges they are facing. We can all benefit from what members are doing. This is also another way to get and give ideas.



**Mike Erickson**—indicated that this is his first attempt at hollowing and thinks he needs a steady rest to be able to move forward.

**Shaun Q. McMahon**—took an idea of Bob Rosand's in Turn-On-Chicago of an executive paperweight and made an executive paperweight pen holder with a surface design stimulated by Rick Bywater's demo.







Match the turners in the right column to their turning(s) in the left column.

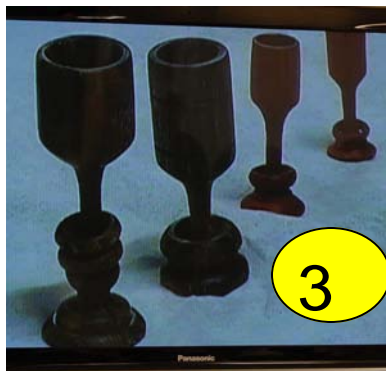


The Challenge was a goblet and/or captive rings

**A David Blair**—thin is cool and so is off center.. He's not a huge talker.



**B Jim Reynolds**—when a friend gave him some wood he decided to make a goblet, Got a captive ring tool at a garage sale. Worked most of a day on one and then it blew up. Made this one today.



**C Mike Erickson**—not only was he busy moving things at the last board meeting, he picked up a piece of oak and decided to give a try at his first goblet.



**D Shaun Q. McMahon**—with everyone going large on the goblets he went small and found out in the process that, in some ways, smaller is more different. Took his inspiration and tutoring from Bob Davis.





E

**5 Larry Dice**—presented a goblet made at the Irish Fest as well as a bottle stopper he made with a goblet on the top of it.



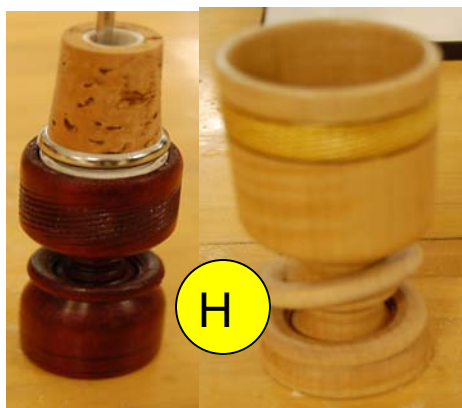
F

**6 Galen Carter**—brought in the goblet that he demonstrated last month. He was challenged by Larry Dice to put a ring on a bottle stopper goblet and he brought in the challenge piece as well.



G

**7 David Barret**—Only have a few seconds to engage a passer-by's interest and doing something that looks weird sometimes helps. The ring is the thing.



H

**8 Jay Skelton**— a first try at a goblet. Not sure about the rings. Thought that starting small would help when he wanted to go bigger.





# Demonstration

The demonstrations that we have during the meetings tend to be the highlight of the meeting. We have great presenters who demonstrate a wide variety of talent and willingly share their skill. But once in a while we have one that is “simply wonderful” — pun intended. **THE TOP GUYS**, **Jerry Darter, Ed Maxwell, David Burke, and Virgil Boyd** (in reserve for the demo)- treated us to a demonstration of what they do and also included why they do it. They like bringing delight to others, everyone from small children to adults and they also demonstrated their ability to do that at the meeting.



**Jerry Darter** started off the demonstration by discussing the informal nature of the Top guys, that they all like what they do but do it in a different way which leads to very interesting discussions. He referenced a book *The Top* by D.W.Gould, that tops have been around for thousands of years, and showed what early tops, made from organic materials, could have looked like. Some spun quite well actually.



Bob Davis made this one so you know it's small. Jerry's dancing girl uses a launcher as it is larger.

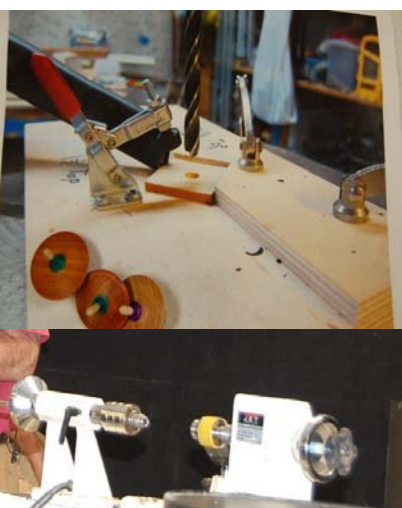


He also talked about different kinds of tops: yoyos, peg top, tippe tops, “button” on a string-the buzzer, the twirler, teetotum and the whip top,

They are also looking for helpers—preferable ones with newer stories.

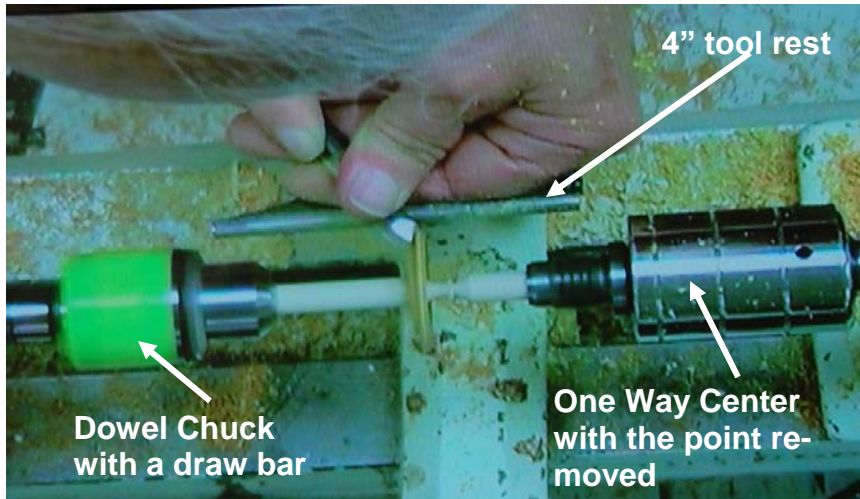


What Ed Maxwell doesn't know about making blanks for tops probably isn't worth knowing. He's made thousands during the 15, or so, years this group has been doing this—he made all the jigs too.





The best dowel is 3/8" Birch and he generally gets 11 posts out of one 3' dowel—Jerry gets less. Ed made a custom sled for his band saw (like you do). The other part of the top he makes about 1.5 " square and .25" thick, and drills them using a jig he made (of course). He then sets them up in this jig designed to hold five at a time and glues them up using CA glue. Then the fun part of turning comes. He uses the wide markers to impart color to the tops. He said he was inspired by a class he attended and the teacher was Kip Christenson



Part of their success at turning tops is that they have developed a process that they all use. They all use the same equipment but they each bring their own individuality to the process.

He turns at about 2500 rpm except when sanding. Puts about 3/8 inch in the dowel chuck, brings up the tail stock (but not too tight), and uses a 1/2" spindle gouge which he sharpens often. The top point can't be too sharp—slightly rounded. Uses 220 grit to sand and finishes with wax. "It is a lot of fun and all I turn anymore."



David said that he joined the group a few years ago and the best part of it is the group "The best thing that happened to me in turning." "The best part of turning tops is watching the people watch the turner and how interested they are. The second best part is giving the tops away." His type of top is a bit larger than Ed's and he makes different styles. He doesn't use any coloring on the tops he turns.

It is really important to keep the tools being used sharp—very sharp. Also uses wax as the finish

Another thing he mentioned is that for individuals with problems with their hands, including arthritis, that top turning can be very beneficial physically





Jerry then made another appearance to show two things, how to make a Tippy Top and a Dancing Girl top.

To make the Tippy Top, he uses a jig he made (naturally). It holds the round piece of wood-1.75 inches- that he gets from Hobby Lobby (Why make round when you can buy round.). He then drills a hole 5/8" deep with a 5/16 hole in it "to some depth"



After drilling the hole, excavate it a bit then use a 3/8 spindle gouge across the face, put in a 5/16" dowel and measure 5/8" out of the diameter and part it off. Then he uses the colored pens to decorate them-college colors or any thing that makes them bright. These are a little easier to spin with the use of a launcher, but not necessary



The dancing girl he turns from one piece of wood. "It works better if you start turning from the bottom of the piece." Then turn it down, on the top, to a tenon that will be used with a launcher. Turn arms, attach and decorate however you like.

Following the demonstration there were a number of members who continued to ask questions, spin the tops, and take delight in watching others have fun as well.

**Caution**—getting involved with top turning can be addictive. It is also good for colds, molds, fits, freckles, dimples, pimples, and can make childbirth a pleasure. I've heard.

Next month's demonstrator



It really is magic.

Here is a group of guys who don't charge KCWT for the materials they buy; they generously donate their time and product to others... Deanna Rose, The Tool Show, the Maker Faire, Church School, and to KCWT. All wonderful turners in their own right, but put them together, and they demonstrate the best of what woodturning can be. Thank you.



# The Shop

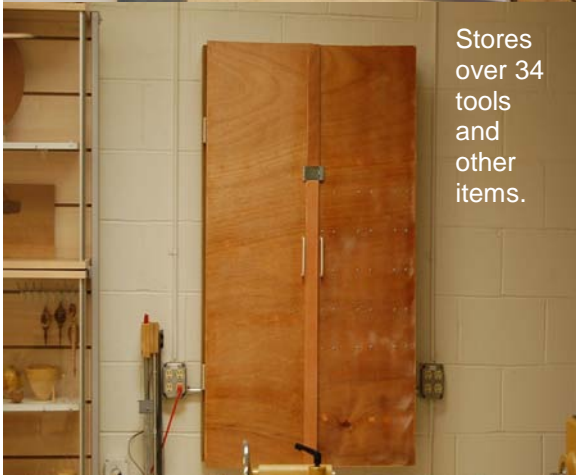
At the October Board meeting there was discussion of changes that we could make in the shop; how we could bring more organization to it. During the meeting **Mike Erickson** got up and started moving things around. The group made some decisions about what we wanted to do and on the Saturday following the meeting **Kevin Neelley, Bud Schenke, and Norm Peters** came in and implemented many of those ideas.



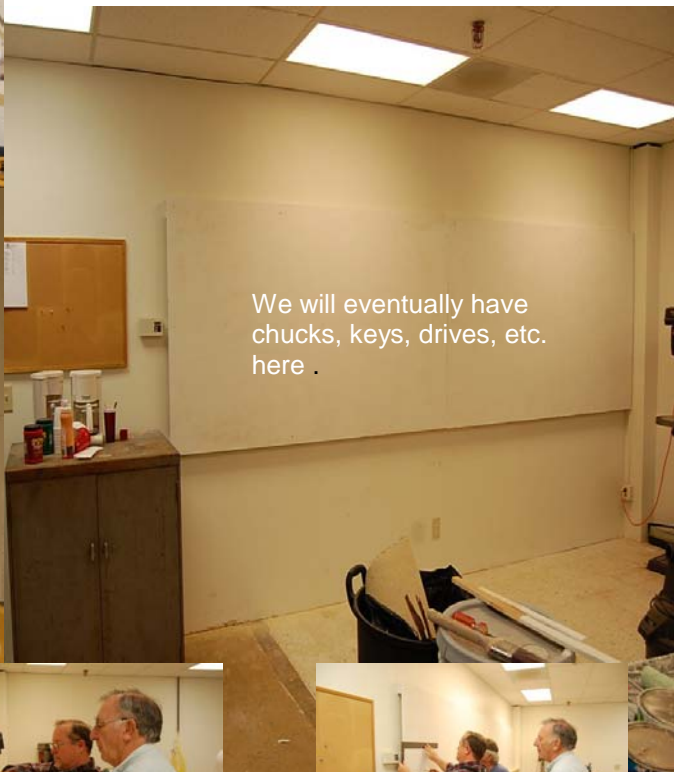
**Charlie at Woodcraft** happily gave us a couple display cases which are in the back of the shop. The tool rack **Bill Kuhlman** made is now hung next to them on the same wall.

We discussed what to do with the lathe tools and decided that mounting them on a board in the front of the shop sounded like a good idea. So they brought in the wood, hung it, and put the sealing coat on it.

**Thank you all very much**



Stores over 34 tools and other items.



We will eventually have chucks, keys, drives, etc. here .



**Now the major part of the organization needs to be implemented**

Those who use the shop need to be very conscious about putting things away where they belong and cleaning up their area before they leave. That cleaning means the lathe and the chips, shavings, dust, etc around it. We do have a nice facility and it is up to us to keep it that way so that everyone can enjoy it.

# Inside-out Turning

by Bob Davis



We have wonderfully generous members in our organization. **Bob Davis** certainly epitomizes that. He provided this step-by-step process for making an inside-out turning. Follow the directions when all else fails. Make sure tools are very sharp. Using ABC is a very good rule to follow. Be patient and have fun.





# Our Intern In Action

**Kim Davidson** has been with us about half the semester now. She is working with the tutelage of Anthony Harris and she said that she is learning a great deal. She participates in the Open Turnings and on 10/13 practiced with the skew by making something to help feet feel better and then started working on a bowl.



There really is something to be said for repetition.



I think it needs a little bit more off this side.

Learning how to use the chain saw seems to be part of the training.



He really thinks I'm going to make a bowl out of this.



He said to do this so, by gosh, I am.



It's all about round



OK, we're making a small pool.

## Answers to the Challenge

- 9-H
- 5-G
- 7-F
- 8-E
- 4-A
- 3-D
- 2-C
- 1-B

## Officers

### President:

Norm Peters  
913-226-0529

[pres@kcwoodturners.org](mailto:pres@kcwoodturners.org)

### Vice-President:

Jerry James  
816-322-3704

[vp@kcwoodturners.org](mailto:vp@kcwoodturners.org)

### Treasurer:

Kevin Neelley  
913-492-6522

[treas@kcwoodturners.org](mailto:treas@kcwoodturners.org)

### Secretary:

Shaun Q. McMahon  
913-831-4149

[editor@kcwoodturners.org](mailto:editor@kcwoodturners.org)

## Board

Eli Kamara  
913-451-4511

Bill McGoldrick  
913-565-0392

Mike Erickson  
913-829-6534

# AAW News

Mention the AAW and many will wholeheartedly agree that receiving American Woodturner is the primary benefit. But how many are aware of the full complement of benefits and services that come with a membership in the AAW? Just a partial listing illustrates the breadth of features, including the opportunity to apply for an Educational Opportunity Grant (up to \$1,000 for individuals, and \$1,500 for our local chapters and other organizations); receiving \$1M in liability insurance while you are participating in official activities endorsed by the AAW and when participating in official local chapter business; online access to the entire portfolio, over 26 years, of American Woodturner and other educational materials; the ability to list your work for sale on the AAW website; and members-only access to the educational programming at our national symposiums, among many more benefits.

**DID YOU KNOW?** In the past, all memberships were due for renewal at the end of December. As of March, 2011, all membership cycles were converted from a calendar basis to anniversary basis. Your current membership became effective as of your join date and will remain active for one year. Your renewal date is located on your Journal mailing label.

Have you checked out AAW's new program, Woodturning Fundamentals?



## Club Events Calendar

Club events are held at 3189 Mercier, Kansas City, MO  
More information about calendar events and open turnings, please visit our website at [www.kcwoodturners.org](http://www.kcwoodturners.org)

### November

Challenge—a turned toy  
Demonstration—Whistle by David Bartlett  
10th—**Auction**—need help and donations

### December

Party time  
Challenge—a whistle  
Demonstration—membership



**Woodcraft Supply**  
8645 Bluejacket Rd.  
Lenexa, KS 66214  
(913) 599-2800

**Store Hours**  
Mon, Tues, Wed, Fri 9 am—7 pm  
Thurs 9 am—9 pm  
Saturday 9 am—6 pm  
Sunday 9 am—5 pm

As a member of KC Woodturner, you receive a 10% discount except for on sale items and power tools. Make sure you present your KC Woodturner Card.

**Craft Supplies**  
1287 E 1120 South  
Provo, Utah 84606  
1-800-551-8876



Jeff Edemann offers KCWT members 10% off all items except sale items and power tools. Ask Jeff about any discount on power tools.



10% discount on lumber and supplies to all KC Woodturners Chapter members when you present your membership card!

816-892-3398  
800-456-2148  
Fax 816-753-0250  
3001 Southwest Blvd.  
Kansas City, MO 64103-3616