

WOODCHIPS



www.kcwoodturners.org



Monthly Meeting

Happy Thanksgiving

Show And Tell

Reminders

Get your raffle tickets when you come into the meeting.

12/10/11:
Scout Turning—need helpers

Next meeting:
December 12/12/11
PARTY TIME

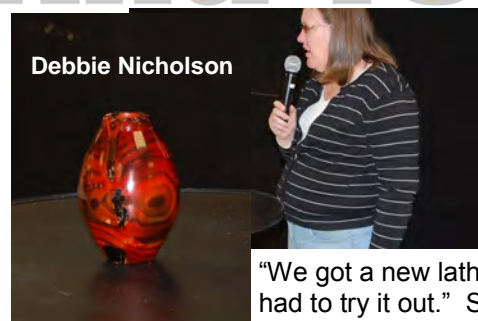
1/27-29/12
Woodworking show at the Overland Park Convention Center.



John Veer-camp said that the scratches didn't show up till he oiled the walnut burl which he turned "fairly wet."



Debbie Nicholson



"We got a new lathe and had to try it out." She did by making an apple vase, died orange, added black rings with a torch, and covered with multiple layers of lacquer.

and Parker Nicholson, not to be out-done...

INSIDE THIS ISSUE

Show and Tell	2
Auction	3-4
Demo	5-6
Calendar	7
Reviews	8
Wood Quiz	9
AAW news	10

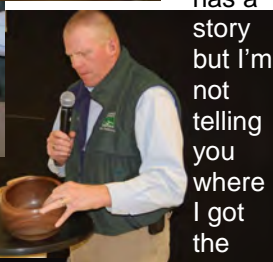
Stand to the side when starting the lathe—this could have broken my ribs when it flew off.



Sometimes turning can get a little "hairy"—be safe. Not a show but some very appropriate cautionary telling.



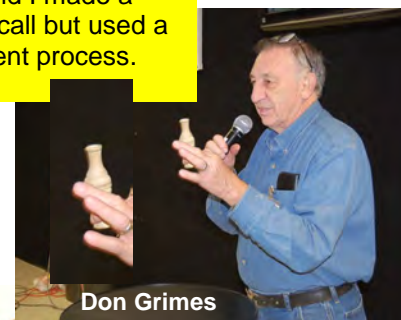
"Every tree has a story but I'm not telling you where I got the wood."



Ray presented his fiery maple bowl with a walnut finial. It had a crack in the side so he used some inlaid to design a butterfly with beautiful results.



The last demo inspired me and I made a duck call but used a different process.



Don Grimes



The Challenge is a Christmas Ornament



Walter Johnson brought an inside-out multi level turning made out of pine with a snowman, a tree, and a cross inside.

The winner of the challenge

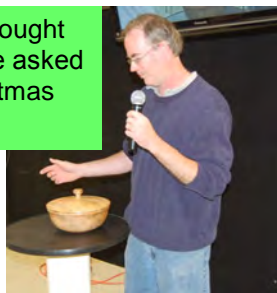


Bob Davis brought an inside-out turning with a hollow top and a couple levels in the finial.

The reason **Parker Nicholson** brought this was because frequently we're asked to bring a covered dish to a Christmas celebration.

"Saw another guy making these bird-houses and I got interested. It looks simple but lots of work and lots of fun."

Two months ago he heard a noise in his car. A mechanic found this prune walnut inside. He attached a finial and voila—a Christmas ornament.



Larry Dice brought his first attempt at making a Christmas ornament and his first attempt at hollowing. Seems like he did grand at both. He brings up a point—first attempts at everything are worth Show and Tell and The Challenge. It is exciting to see development and personal challenges.

A hot air balloon and hollow too



Chip Siskey brought an ornament made of box elder



Mr. Hendrickson said that this was an exercise in futility and an earthquake caused the list but it lights up and the switch and the battery are in the bottom.



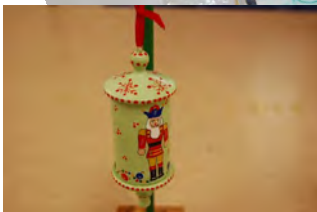
One of the reasons to come to the meeting.



Don Grimes used a sea urchins to make a couple ornaments. "They don't have to be hollowed but they are very fragile. He also made one so it could be attached to a Christmas light.



On 11/12 we held our **Annual Auction** in conjunction with the WoodWorkers Guild. There were all sorts of things brought in for the auction and a great many of them were supplied by the KCWoodturners and here are some of what was made available. Thank you all for your participation and



The place opened up at 7:00 AM or so and there was a pretty big empty.

All bids in even dollars.
Minimum raise is \$1.

Please overbid, extra is tax-deductable.



Club Members
will need name
badge to receive
bidder #

Tables all set
up but we
still managed
to receive
last minute
donations.

"Stuff"
gets exam-
ined

Pretty soon
people start
arriving.
And the
helpers
were ready

Bud Schenke

Sold for...

Settling up...this is
where the rubber meets
the road...OK it's a
trucker metaphor.

The trouble
with "newbees
like Pete
Stiglich is they
just can't han-
dle the excite-
ment

But there were lots of
trucks here



The Demo

Introducing

Bill Whipple

He began the demo by relating a “true” story about traveling by train while he was in the service. He had to share a sleeper with a female who had the lower bunk. He got cold during the night and asked her...well if you’d been there, you would know.

The first rig he showed was a hybrid made with a palm sander and a wolverine jig. Could make it with a belt sander and it might work better. Good on scrapers. Put it together for about \$110.



The second unit is a Workshop devise about \$200. Has a couple different tops—one for skewers on top and another for honing other tools from below. No special add-ons needed.

The Jool Tool (below) was the third sharpening devise Bill presented. The basic unit runs about \$350. It is not used to shape tools but only to hone them. He suggests that the user mark the edge to be honed with black marker to make it more visible when looking down through the spinning wheel. He presented the information as one who was very familiar with the unit, said that he uses it to hone almost anything that he uses including wood cutting tools.



The old standard is the Delta variable speed grinder though he was not particularly high on the variable part. The fast speeds can make a tool smaller in short order. “At slow speeds it does pretty well.” He discussed stones and the benefits of obtaining and using a balancing add-on. He dresses the stones with the diamond dressing tool (next page). The setup also uses a Wolverine jig. One can easily have over \$300 invested in sharpening with this combination.





Demonstrating the diamond wheel dresser



The center piece of Bill's presentation—The Robert Sorby Sharpening System. It is about \$500.00 but it also needs nothing extra—no add-ons. The skew and gouge sharpening jigs are included with the setup. "It has all the required equipment to sharpen all woodturning tools." It's belt (to replace costs about \$9) travels about 700RPM, there is a plate behind the belt for tool shaping, angles change easily so you determine tool bevel, the belts change easily and quickly, and the whole system is very user friendly.



Gouge jig



Angle platform



The last system was the Swedish Tormek wet sharpener. It turns very slowly and does a nice job. The down side is that it takes quite a bit of time to reshape a tool. The stones are expensive and this is the most expensive system. The least expensive Tormek runs about \$400.00. Bill concluded by saying that all systems have their advantages and disadvantages and that it was up to the individual to determine which one(s) were going to meet his/her needs.



After Bill completed the formal part of the presentation there were quite a few people who had questions for him about the various systems. He stayed around till all the questions were answered. **Bill Whipple**—excellent teacher, thank





By **Shaun Q. McMahon**

Thanksgiving Trivia

1. Which U.S. president first proclaimed Thanksgiving as the third Thursday in November, upsetting folks?
2. Thanksgiving is now observed on what number Thursday in November?
3. In what year did the Pilgrims first come to North America?
4. Which "John" was first governor of the Plymouth Colony?
5. What was the name of the first colonial agreement forming a government, the Mayflower?
6. Which "William" served as religious leader of the Plymouth Colony?
7. What was the clothing of Native Americans mainly made from during this era?
8. What Plymouth military advisor was remembered in "The Courtship of"?
9. Who primarily cared for the Pilgrims' beer kegs on their journey to the New World?
10. What Patuxet Indian saved the first Pilgrims from starving?
11. A wild turkey has a field of vision of about how many degrees?
12. About how many tons does the real Plymouth Rock weigh?
13. What sound does a female turkey make?
14. Which turkeys gobble?
15. Which book of the Bible mentions "thanksgiving" the most?

Club Events Calendar

Club events are held at 3189 Mercier, Kansas City, MO

November

- 11/24— HAPPY THANKSGIVING—** no turning
11/26—4th Saturday Workshop, 8:30am to noon

December

- 12/10 -** pen turning for the scouts - need volunteers from 1100-1500 Boy Scout Troop 136
12/5—Board Meeting— get information to board members about concerns that you have so that they can be considered.
12/12—CHRISTMAS PARTY -
12/22— 4th Saturday Workshop 8:30 to noon
12/24— 4th Thursday open turning 6:00 to 9:00 PM

January 2012

- 1/27-29-** Woodworking show at the Overland Park Convention Center. We will have a booth and will also assist Craft Supply with pen turning in their booth.

WE NEED VOLUNTEERS



**WE ABSOLUTELY
NEED AND WANT
YOUR HELP FOR
THIS!**

ANSWERS to Trivia Questions

- (1) FDR (2) 4th (3) 1620 (4) Carver (5) Mayflower Compact (6) William Brewster (7) animal skins (8) Miles Standish (9) John Alden (10) Squanto (11) 270 (12) 4 (13) click (14) male (15) Psalms



Officers

President:
John Burright
785-766-9219

pres@kcwoodturners.org

Vice-President:
Ben Hayes
913-724-1157

vp@kcwoodturners.org

Treasurer:
Kevin Neelley
913-492-6522

treas@kcwoodturners.org

Secretary:
Don Grimes
913-962-2060

sec@kcwoodturners.org

Board of Directors:

Rick Bywater
913-897-0765

Jerry James
816-322-3704

Shaun McMahon
913-831-4149



WOODCHIPS 7

Definitions:

Chucking— doesn't necessarily mean that wood is actually attached to the lathe.

Epoxy— an adhesive resin based on the digucidyl ether of bisphenol-A or bisphenol-F.
True and funny enough.



REVIEWS

YOYO Turning with Ed Davidson (AKA YoYo Spin). 120 minutes, Produced 2009. It is number 3091 in our library.



If you are looking to do a fun toy project where you don't need a lot of special tools, don't have a great deal of time, and want to impress the heck out of some kids - this video might just be for you. It is a pretty basic video so the pace may seem a little slow for advanced turners.

He begins by talking about safety and the importance of knowing your equipment. Then he moves right into the materials he uses. He wants a high density hard wood like yellowheart or bloodwood and one that has fine grain and tends to be heavy - 45 to 75 grams is where you want the weight of the yoyo to be. Laminated woods do not work well as they can easily lead to balance problems because of different densities. Acrylic is fun to use but it needs to be cast not extruded as the cast is much harder and won't melt.

The tools and materials are easy to come by. He uses plumbing "O" rings around the edges of the yoyo for bumpers and the only other thing necessary is the string - both easily obtainable. The tools he uses are a scroll chuck, skew, round nose scraper, roughing gouge, thin parting tool, and a texturing tool.

Ed starts with a 2"X2" block with the grain between centers, turning at 1200RPM and uses the skew to round out the blank, turns a tenon, mounts in the chuck, uses the round nose scraper to smooth the end grain, then he starts measuring. He shows the entire process including designing, texturing and finishing. After demonstrating the entire process using wood he repeats it using acrylic. The final part of the video is a list of supplies and the suppliers that he uses.

The video is rather straight forward, the pace is slow enough that you can acquire the information easily through note taking or, using your incredible powers of retention, can remember everything with just one viewing. The process seems easy enough and does not require getting any of the "specialized tools" that are available.



Bowl Turning with Del Stubbs, 120 minutes, Produced in 1995. It is number 3083 in our library.

I have seen a lot of instructional videos over the years on a variety of topics but few have stood up to the test of time, been as informative, were as enjoyable to watch, or been as humorous as this "oldie but goodie." It was originally released as VHS and re-released in 2005 as a DVD. There was some loss of quality in the translation from VHS to DVD but not enough to lessen the impact of the training provided.

He grabbed my interest right away when he started talking about the art of woodturning over the sounds of a flute playing oriental sounding music. He then compared the activity of turning to dance and the various movements from the powerful to the sensual detailing involved in producing a piece a piece of beauty. His manner of presentation is gentle, very precise, and entertaining. He has a wonderfully understated sense of humor and takes obvious delight in what he is doing.

After the overview he describes the four families of tools; scrapers, deep cut gouges, shallow gouges, and modified. He doesn't have a particular axe to grind regarding specific tools but encour-

throughout the video, the turner to experiment with all the tools until one's own style and expertise is developed. The close-ups of the tools as well as the demonstrations of how the tools cut are wonderful, giving the viewer a very specific experience of how the tool works. But "they all are just handles with an edge on the end." He also demonstrates holding tools and the various ways a variety of tools can be used. "Use the top, the middle, and the bottom of the tool. After all, you bought the entire tool."

The video is very useful for the beginner as Del demonstrates so many tools in a manner easily understood, techniques in using tools, chucking, sharpening (no jigs involved) and shows the entire process of bowl cutting. The advanced turner might enjoy the video as it may expand the way tools are thought of as well as the process of turning. His "design technique" using a mirror is very interesting all by itself. He shares his adaptations of tools, the lathe, chucks, and faceplates. He discusses turning as honorable, a very human activity, a connection to something very natural. It is a beautiful way for an individual to express self. This video has something for everyone. I only watched it three times and there are reasons to watch it more.

Read this for info on how to get your membership for FREE!

You can do this simply by encouraging others to join KC Woodturners. You already know all the benefits and you are already interested in and excited about woodturning. Why not pass that enthusiasm to others by talking up the organization. If you get one person to join, then you will get \$15.00 off your next year's dues. Get a second person to join and you get an additional \$20.00 off your dues. When you get a third person to join, **your next year's membership cost you nothing.** Go for it! This starts January 1, 2012 so start planning.

WOOD:

From the 18th century to the early 20th century, elms were among the most widely planted ornamental trees in North America. They were particularly popular as a street tree in avenue plantings in towns and cities, creating high-tunnelled effects.



The wood of American elm is moderately heavy, hard, and stiff. It has interlocked grain and is difficult to split, which is an advantage for its use as hockey sticks and where bending is needed. It is used principally for furniture, hardwood dimension, flooring, construction and mining timbers. Some elm wood goes into veneer for making boxes, crates, and baskets, and a small quantity is used for pulp and paper manufacture.



American elm is typically a yellowish white color, occasionally containing a reddish brown color through heartwood portions of the wood. This wood is very strong and durable, and takes on stains and finishes very well.



Tip of the Month

Old tooth brushes make great cleaning aids for stubborn grit and grime and will not damage your metal surfaces.



NEW MEMBER

Welcome to Larry Settle. He is a member of the WoodWorkers Guild and thought he'd give us a try. Look to see you in the Show and Tell and Challenge soon.

WANTED

If you want to participate in helping with the newsletter GREAT! If you have an article you want to write GREAT! If you have an idea for an article GREAT!

Also—if you have an item for sale or swap GREAT

Send an email to
editor@kcwoodturner.org

QUIZ—Participants need to respond to the following question by emailing the answer to editor@kcwoodturners.org by the Saturday before the meeting. Correct answers will be entered in a drawing at the following meeting for a Craft Supply gift certificate. You must be present to win.

QUESTION

Who was the "newbee" who fell asleep during the auction?

AMERICAN ASSOCIATION OF WOODTURNERS INFORMATION

[Craft in America](#) is a show on PBS, which features craft artists from around the United States. The latest episode, titled *Family*, explores the story of four craft artist families, including the Moulthorps.

[You can view the Family episode, as well as all other Craft in America episodes](#)

Do you have an exciting project, workshop, or goal that you would like help with? EOG grant applications are now being accepted online!

In 2011, AAW awarded over \$70,000 in Educational Opportunity Grants to individuals, chapters, and schools. New this year, we will be adding 10 symposium scholarship registrations. Don't miss this opportunity to take your woodturning skills to the next level, or see your local chapter grow. Apply before January 15th to be eligible for a 2012 EOG grant. [Details](#) and [application](#) can be found on our website.

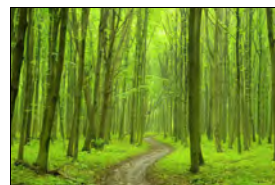
[Read](#) about how the Ohio Valley Woodturners used an EOG grant to develop a youth program for their 2011 symposium! All the information is on the website.



Call for Entry

AAW's Annual Juried
Exhibition:

A Walk in the Woods



Sharpen your tools and fire up your creativity! AAW's Annual Juried Exhibition for 2012 is, *A Walk in the Woods*. The true theme is excellence, and we anticipate that this juried exhibition will showcase the depth, creativity, and skill of our membership. The entry fee is \$30 per person, and you may submit up to three pieces. Online applications will be accepted November 1 February 3, 2012.

**All the information you
need is located at**

<http://www.woodturner.org/gallery/walkinthewoods/>



If you do not belong to this organization, you might consider going to their website at www.woodturner.org and giving the site a look through. It contains a great deal of information and they have a publication that you can either view on-line or receive through the mail.



Woodcraft Supply
8645 Bluejacket Rd.
Lenexa, KS 66214
(913) 599-2800

Store Hours

Mon, Tues, Wed, Fri 9 am—7 pm
Thurs 9 am—9 pm
Saturday 9 am—6 pm
Sunday 9 am—5 pm

As a member of KC Woodturner, you receive a 10% discount except for on sale items and power tools. Make sure you present your KC Woodturner Card.

Craft Supplies

1287 E 1120 South
Provo, Utah 84606
1-800-551-8876



Jeff Edemann offers KCWT members 10% off all items except sale items and power tools. Ask Jeff about any discount on power tools.



10% discount on lumber and supplies to all KC Woodturners Chapter members when you present your membership card!

816-892-3398
800-456-2148
Fax 816-753-0250
3001 Southwest Blvd.
Kansas City, MO 64103-3616