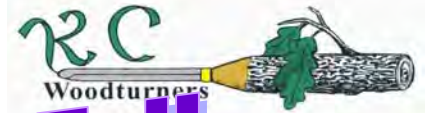


WOODCHIPS



www.kcwoodturners.org



Monthly Meeting

Reminders

Next meeting:

October 10, 2011

The challenge: Something with a finial.



The demonstration:

Ben Hayes will be making duck calls.



Be on the lookout for information related to the auction taking place in November. Look for emails and check the website, www.kcwoodturners.org

Your participation is essential to make this a success. It provides much needed revenue for our operating expenses.

Bud Schenke will be conducting an AV course for anyone wanting to learn how to operate the cameras and monitors for the meetings.

September 24 at 1000.

Show and Tell

We had quite a few participate this month, from beginners to advanced.

Remember, everyone can participate in both Show and Tell and The Challenge. Spend some time with your lathe and bring in your projects and let us see what you do.

Kevin Neeley



Kent Townsend



Two burls from Utah

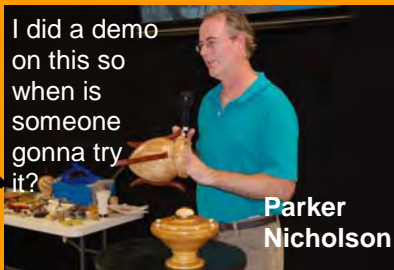


Walter Johnson

I did a demo on this so when is someone gonna try it?



Parker Nicholson



First attempts at bowls are exciting to see.

Greg Martin



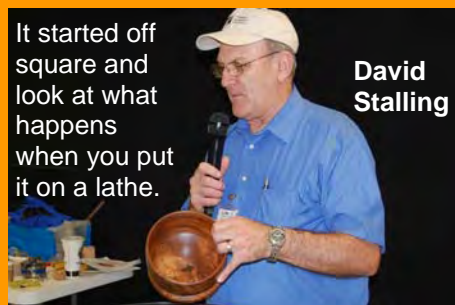
Not sure either one of these will hold wine

Jerry McMaster



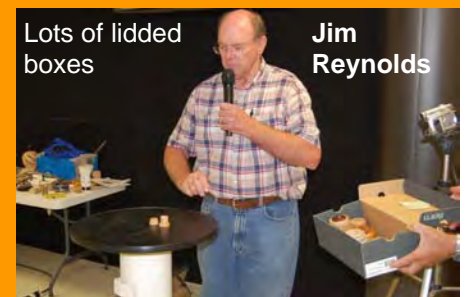
It started off square and look at what happens when you put it on a lathe.

David Stalling



Lots of lidded boxes

Jim Reynolds



IN THIS ISSUE

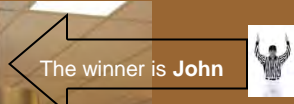
The Challenge and Open House	2
Definitions and Woods	3
Skewed, calendar, President's Message	4
News and Quiz	5
September Demonstration	6

The Challenge

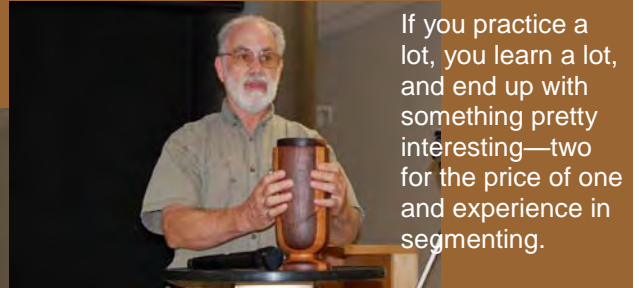
This month's challenge was to turn a brochure holder—something that we could put in a store so that our brochures will be available for customers to see and, hopefully, promote some interest in the KCWT. We had three club members rise to the occasion.



Making the lexan fit was the toughest part of the project, so **John Burr** said.



You can do a lot with a scrap piece of cedar as **Don Grimes** showed us and you'll never know what you'll get when you start turning.



If you practice a lot, you learn a lot, and end up with something pretty interesting—two for the price of one and experience in segmenting.



The Open House



Galen Carter



Jerry James



Jerry Darter making tops for Deanna Rose Petting Zoo



Omara Ortiz



Work in process



Bill Kuhlman showing off



Eli Kamara



Kevin Neely—Bud Schenke and Don Grimes setting up

Definitions:

Blank: the look on one's face after a new "design enhancement" is added to the project you are working on.

Bond: An adhesive or anchor that holds woodturners together in their common form of affliction.

CA glue: cyanoacrylic ester adhesive - also known as: superglue, oops, now what, how'd I do that, that'll never come off, I'm stuck, and oh s--t.

Wood used in Turning: Beech

The wood is light brown in color with diffuse pores, mostly straight tight grain, and rather high density which means that it can take some abuse without showing it. Finishing does not require any filler and it glues rather easily with a variety of adhesive materials.

It tends to be a lustrous wood that is readily available, bending high so if you are looking for a wood to bend in a project, beech wood is a good choice when used with steam. A tough wood, it can dull tools easily and it is somewhat difficult to carve. It takes clear finishes well including varnish. It stains easily with water base stains.



Some individuals may experience dermatological and respiratory problems using this wood. When turning this wood green with a look to having the piece dried, shrinkage can be rather high.

Spalted Beech occurs when ordinary beech begins the process of decay. The fungi involved leave beautiful irregular and full bands of color throughout the wood. The fungus grows to form black and brown markings which make spectacular patterns in the turning.



Some individuals may experience dermatological and respiratory problems using this wood.

When turning this wood green with a look to having the piece dried, shrinkage can be rather high.

Spalted Beech occurs when ordinary beech begins the process of decay. The fungi involved leave beautiful irregular and full bands of color throughout the wood. The fungus grows to form black and brown markings which make spectacular patterns in the turning.



Woodcraft Supply
8645 Bluejacket Rd.
Lenexa, KS 66214
(913) 599-2800

Store Hours

Mon, Tues, Wed, Fri 9 am—7 pm
Thurs 9 am—9 pm
Saturday 9 am—6 pm
Sunday 9 am—5 pm

As a member of KC Woodturner, you receive a 10% discount except for on sale items and power tools. Make sure you present your KC Woodturner Card.



Craft Supplies

1287 E 1120 South
Provo, Utah 84606
1-800-551-8876



Jeff Edemann offers KCWT members 10% off all items except sale items and power tools. Ask Jeff about any discount on power tools.



816-892-3398
800-456-2148
Fax 816-753-0250
3001 Southwest Blvd.
Kansas City, MO 64103-3616

10% discount on lumber and supplies to all KC Woodturners Chapter members when you present your membership card!



By Shaun Q. McMahon

YOU MIGHT BE A WOODTURNER IF...



- You know what “design enhancement” means



- Insanely sharp is better than unbelievably sharp
- You actually know what “CA” stands for



You sneeze wood chips

- Tools are remanufactured or invented



Holes in wood are beautiful

- Chasing doesn't have anything to do with romance
- You have wood chips inside your shirt
- Finishing doesn't mean complete

Club Events Calendar

Club events are held at 3189 Mercier, Kansas City, MO
September

09/22 - 4th Thursday— Open turning, 6:00 - 9:00 pm
09/24- 4th Saturday Workshop, 8:30 am to Noon
And Bud Shenkie's AV workshop—10:00

October

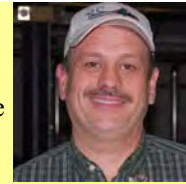
10/5— Board Meeting, 7:00pm
10/12— Club Meeting, 7:00pm
10/22— 4th Thursday—Open Turning, 600— 9:00
10/24— 4th Saturday Workshop, 8:30 am to noon

November

11/7—Board Meeting, 7:00pm
11/14—Club Meeting, 7:00pm
11/24— HAPPY THANKSGIVING
11/26—4th Saturday Workshop, 8:30am to noon



President's Message



Volun- keep our club First I would like current officers of the board of spend countless

John Burrite

teers are what running. to thank the and members directors who hours working on the operations of the club. Thanks to Shaun McMahon for volunteering to take over the duties as editor of the newsletter. To Madonna and Ryan Richardson who make sure that there are drinks and treats for the monthly meetings. Our librarian, Bud Schenke, keeps track of our printed and video collections and shows us the demonstrators from different vantage points during the meeting, and manages our web site. Kevin Neelley & Don Grimes keep track of our finances and run the monthly raffles. The list could go on and on.

Volunteers make us go. Coming up soon will be many opportunities to be part of what keeps us running. There are committees that help in the operation of the club. Social, Education, Facility, Finance, Auction, and Marketing are areas that could use your help. Our yearly auction, which we rely on for a good part of the club's operating budget, will need many hands so that it will run smoothly: people to help organize the sale items as they come to the clubs, to list these items, and use different avenues to promote the sale; more volunteers the day of the sale, to help with registering bidders, recording sales, and helping winning bidders load their treasures. The scout pen turning will need mentors to assist the scouts in learning the basics of turning and to make a pen. With the start of the new year, will come one of our biggest recruiting opportunities, the Woodworking Show, where we will need all kinds of volunteers.

There is always a need for another turner, helper, greeter, or coffee assistant. Step up and volunteer. Don't wait to be asked. You don't need to be a master turner. All you need is to be willing to share the expertise that you have. Remember that someone helped you get started. We need volunteers so we can continue to share our passion of turning with others.

YOU CAN GET YOUR MEMBERSHIP FOR FREE! WHAT A DEAL!

You can do this simply by encouraging others to join KC Woodturners. You already know all the benefits and you are already interested in and excited about woodturning. Why not pass that enthusiasm to others by talking up the organization. If you get one person to join, then you will get \$15.00 off your next year's dues. Get a second person to join and you get an additional \$20.00 off your dues. When you get a third person to join, your next year's membership cost you nothing. Go for it! This starts January 1, 2012 so start planning.

The new KC Woodturners signs you see coming in the front door, and in other locations, were made for us, and donated by **Richard Dungan** of Creative Printing. If you or your company has a printing need, please give him a call.



Some Celebratory News

On September 15th the Lenexa Arts Council held its annual Lenexa Artist Show at the Lenexa City Hall. There were Woodturnings entered by Bud Schenke and Russ Blaser.

Russ won 2nd place for his Natural Edge Burl Bowl, and Bud Schenke took 1st place with a Maple and Zebra wood Segmented Bowl.



Congratulations



Tip of the month:

Unless you are turning a significant number of projects every year, don't purchase large containers of finish. Most finishes have a short shelf life and may become unusable before you can empty the container. Remember, the clock starts ticking on the date the finish is manufactured, not the date you purchase the product.

QUIZ—Participants need to respond to the following question by emailing the answer to sec@kcwoodturners.org by the Saturday before the meeting. Correct answers will be entered in a drawing at the following meeting for a Craft Supply gift certificate. You must be present at the meeting to win.

This month's question is: Who made four pens at The Open House?

Officers

President:
John Burrigh
785-766-9219

pres@kcwoodturners.org

Vice-President:
Ben Hayes
913-724-1157

vp@kcwoodturners.org

Treasurer:
Kevin Neelley
913-492-6522

treas@kcwoodturners.org

Secretary:
Don Grimes
913-962-2060

sec@kcwoodturners.org



Board of Directors:

Rick Bywater
913-897-0765

Jerry James
816-322-3704

Shaun McMahon
913-831-4149



WOODCHIPS 5

September Demonstration

Talk about a difficult situation! Ben Hayes was to be our demonstrator for the month but was called away on family business and **Chip Siskey** stepped in a month early to provide the demo for us. And what a demo it was! He showed us how to make a grooved, with insets, box with a finial. His focus was on cutting the grooves for the insets, turning the glued insets, and turning the finial. He strongly suggested that the turning be made from a drawing not only imagination at the lathe. "Challenge yourselves to do it this way."

He began by discussing the finial. He looked for articles regarding the finial and found two in all the journal articles online. He related that Cindy Drozda believes that the finial is a "kind of punctuation" for the piece and that the criteria for what it looks like is whether it provided balance for the piece and it is pleasing to the turner. He brought along a number of pieces and finials to punctuate his point.



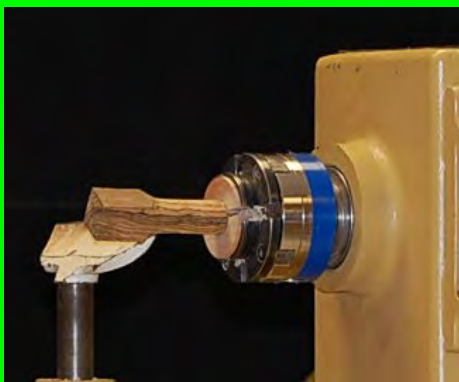
Turning the bowl began with screwing the wood onto a paraffin lubricated screw, (Make sure the screw is tight in the chuck!) rounding with a roughing gouge, and turning a tenon for use in the chuck.

He then showed his set-up for cutting the grooves into the bowl. It involved a homemade jig for holding the router and a computer produced indexing wheel. Pieces of contrasting wood are cut to fit into the grooves and glued in place



Wood pieces cut and glued into the grooves routed in the bowl. He uses a very sharp spindle gouge to shape the bowl.

Chip then started to turn the blank for the finial. In order to complete the more intriguing aspects of the demo—a collet chuck made of maple. This is used to hold the blank so that the tenon is not damaged by the metal chuck as the tenon will fit into the hole in the top of the box.



He worked from a template he made for the finial, continually checking his work as he progressed. He also reminded us to always work from the tail stock to the head stock and from the largest part to the smallest. The box was maple and the box insets and the finial were made of bocote.



The piece he brought in.

The demo, as with most demos, had a few challenges but "after all it is only a demo." The challenges are ones we all face daily in turning and Chip handled them like a practiced demonstrator—with humor and understanding.

Chip, thanks for showing us how to easily make the design in the foot and for a very informative and entertaining demonstration.



The piece he turned for us.